



WATER TREATMENT SYSTEMS
**PIT SYSTEMS
AND ACCESSORIES**



MAKING A POSITIVE IMPACT ON OUR ENVIRONMENT FOR TODAY AND FUTURE GENERATIONS.



3' x 9' x 4.5' 3-stage collection pit, 12-0074

2' x 2' x 3' sump pit, 12-0073

3' x 3' x 4.5' catch basin, 12-0071

Use these premium quality fiberglass pit components to create a customized pretreatment pit system for wash water recycle or sewer discharge operations.

Pit Components Are Designed To:

- Effectively pre-treat wash water for treatment by an above-ground system
- Be easily installed by your contractor

3' x 9' PIT SYSTEMS

PART NUMBER	PIT SIZE (FT.)	DESCRIPTION	SHIP WT.
12-0074	3x9x4.5	3-stage collection pit, fiberglass, 600-gallon capacity	480 lb.
12-0223	3x9x4.5	3-foot x 9-foot baffleless pit, fiberglass, 600-gallon capacity	480 lb.
12-0238	3x9x4.5	2-stage collection pit with single baffle, fiberglass, 600-gallon capacity	480 lb.
12-0244	3x9x4.5	3-stage collection pit with middle weir and third baffle, fiberglass, large solids settling area, 600-gallon capacity	480 lb.
20-1505A18	Fits 3x9	Pit liner assembly, painted; 2 qty. are required	45 lb.
56-0032	Fits 3x9	Aluminum hinged diamond plate cover with 3 frame sections	100 lb.
RC-0001-0003	Fits 3x9	Brace kit for installation of 3-stage collection pit	200 lb.
RC-0018-0001*	Fits 3x9	Steel grating for pit; 3,060 lb./ft. ² uniform load rating	546 lb.
RC-0018-0002*	Fits 3x9	Steel grating for pit with steel cover; 3,060 lb./ft. ² uniform load rating	680 lb.



Steel grating for pit, RC-0018-0001

*May combine RC-0018-0001 and RC-0018-0002 to have both open and closed sections for the 3' x 9' pits. See photo on page 8. Consult factory for more information.

3' x 3' PIT SYSTEM

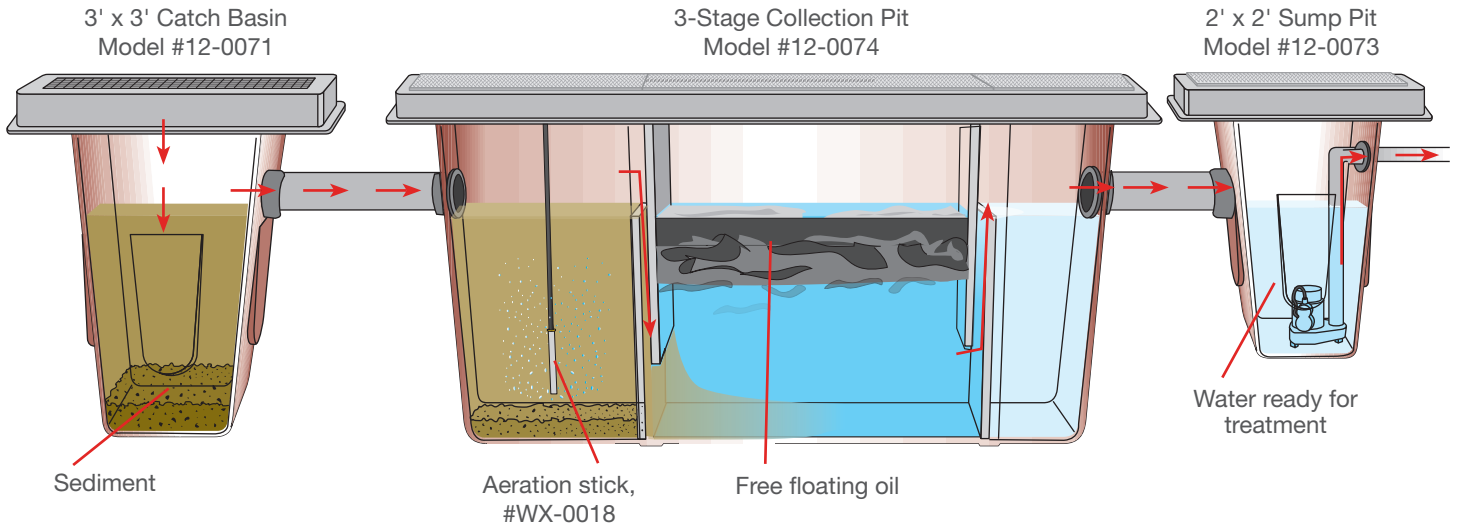
PART NUMBER	PIT SIZE (FT.)	DESCRIPTION	SHIP WT.
12-0071	3x3x4.5	Catch basin, fiberglass, 100-gallon capacity	190 lb.
20-0480A18	Fits 3x3	Steel grating for pit, 2 sections; 6,250 lb./ft. ² uniform load rating, H-20 load rated	250 lb.
20-1533A18	Fits 3x3	Pit liner assembly, painted	26 lb.
56-0031	Fits 3x3	Aluminum diamond plate cover and frame	30 lb.
RC-0001-0002	Fits 3x3	Brace kit for installation of 3-foot x 3-foot pit	150 lb.



Aluminum diamond plate cover and frame, 56-0030

2' x 2' PIT SYSTEM

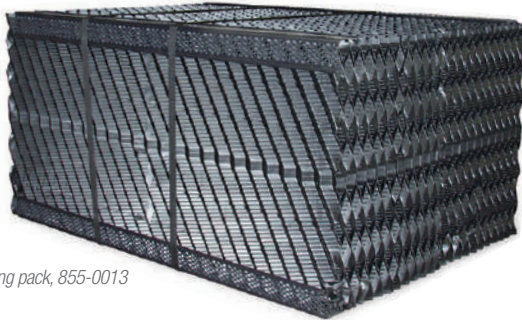
PART NUMBER	PIT SIZE (FT.)	DESCRIPTION	SHIP WT.
12-0073	2x2x3	Sump pit, fiberglass, 50-gallon capacity	92 lb.
20-0479A18	Fits 2x2	Steel grating for pit; 6,660 lb./ft. ² uniform load rating, H-20 load rated	100 lb.
56-0030	Fits 2x2	Aluminum diamond plate cover and frame	60 lb.
RC-0001-0001	Fits 2x2	Brace kit for installation of 2-foot x 2-foot pit	75 lb.



Bulkhead Fittings



Sump Pumps



ACCESSORIES:

PART NUMBER	DESCRIPTION
3-0216	Submersible sump pump – Stainless-steel replacement, 1/2 HP, 230V, 10, 5.0A
3-0460	Replacement sump pump – Surface-mount, 1.0 HP, 115V, 15.0A or 1.0 HP, 230V, 8.0A
33-0661	Trap and basket – Used on #3-0460 sump pump
55-1848	Bulkhead fitting – For piping of pits, 2-inch, 1 each
55-2248	Bulkhead fitting – For piping of pits, 3-inch, 1 each
55-2448	Bulkhead fitting – For piping of pits, 4-inch, 1 each
855-0013	Oil coalescing pack – For #12-0074 3-stage collection pit

OPTION:

PART NUMBER	DESCRIPTION
WX-0018	Aeration stick assembly – Prevents water from stagnating, includes regulator assembly, for aeration of pits

ALUMINUM SUMP PIT AND GRATING:

PART NUMBER	DESCRIPTION
56-0069	Aluminum round sump pit – Lightweight aluminum design; 4-inch NPT inlet; 2-inch x 2-inch NPT and 1-inch x 3/4-inch NPT outlets; 52-gallon capacity
56-0070	Aluminum sump grating – Lightweight aluminum cover for #56-0069 aluminum round sump pit

Pit Cleaner



Pit cleaner assembly, RC-0002-0001

Sludge carrier, RC-0003-0001

.....

The Mi-T-M Pit Cleaner is the right tool to aid in the clean-up of solids in hard-to-reach places. It is designed to draw and filter the solids that collect in wash water pits.



Sludge box with 10-ft. PVC hose, 855-0017



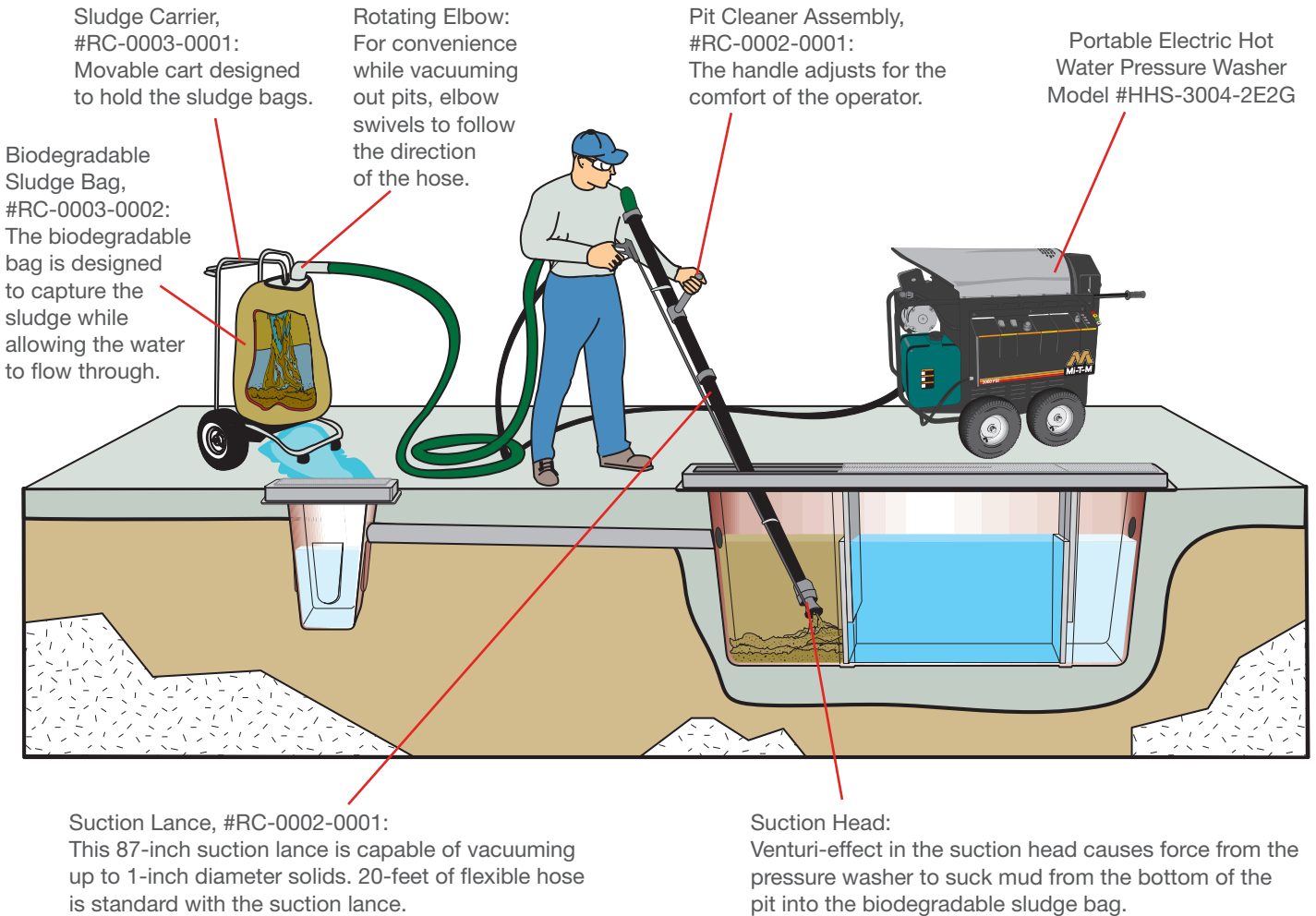
Biodegradable sludge bags, RC-0003-0002

Applications:

- Mud and sludge pits
- Sand pits
- Heavy grass clean-up

Use with pressure washers with 2.0-GPM up to 5.0-GPM water volume and 1000-PSI up to 4000-PSI maximum operating pressure.

PART NUMBER	DESCRIPTION	DIMENSIONS (LxWxH)	SHIP WT.
855-0017	Sludge box – Plastic box designed to hold the sludge bags; includes a 10-foot x 2-inch diameter PVC hose	30x20x16in.	131 lb.
RC-0002-0001	Pit cleaner assembly – Includes suction lance, suction head and flex hose; 87-inch suction lance is capable of vacuuming solids up to 1-inch diameter, 20-foot of flexible hose is standard with the suction hose	93x12x4in.	25 lb.
RC-0003-0001	Sludge carrier – Movable cart designed to hold the sludge bags	22x29x48in.	53 lb.
RC-0003-0002	Biodegradable sludge bags – Designed to capture the sludge while allowing the water to flow through, used with either #855-0017 sludge box or #RC-0003-0001 sludge carrier; 5 qty.	–	–



Recommended Applications:

- Rental yards
- Golf courses
- Heavy equipment dealers
- Trucking facilities
- Military bases
- Truck rental fleets
- Diesel repair facilities
- Forklift washing operations
- Aircraft maintenance and restoration
- Shipyards
- Municipalities/State DOTs
- Oil fields
- Engine rebuilders and manufacturers

The Importance of a Proper Pit System:

Once equipment is washed, the untreated wash water flows into your pit system. A proper pit system for your application is the first step in proper wash water treatment and a critical element in any wash water recycle system.

Consult Mi-T-M Corporation or your local distributor to determine the pit system configuration that works best for your application.



BPS-120M

The Biological Pit Enhancement System enables you to inject microbes and nutrients into water where oil collects. This will improve the quality of the water stored in pits.



Aeration stick

Shown with side panel removed and liquid microbes, AW-0058-0020, not included

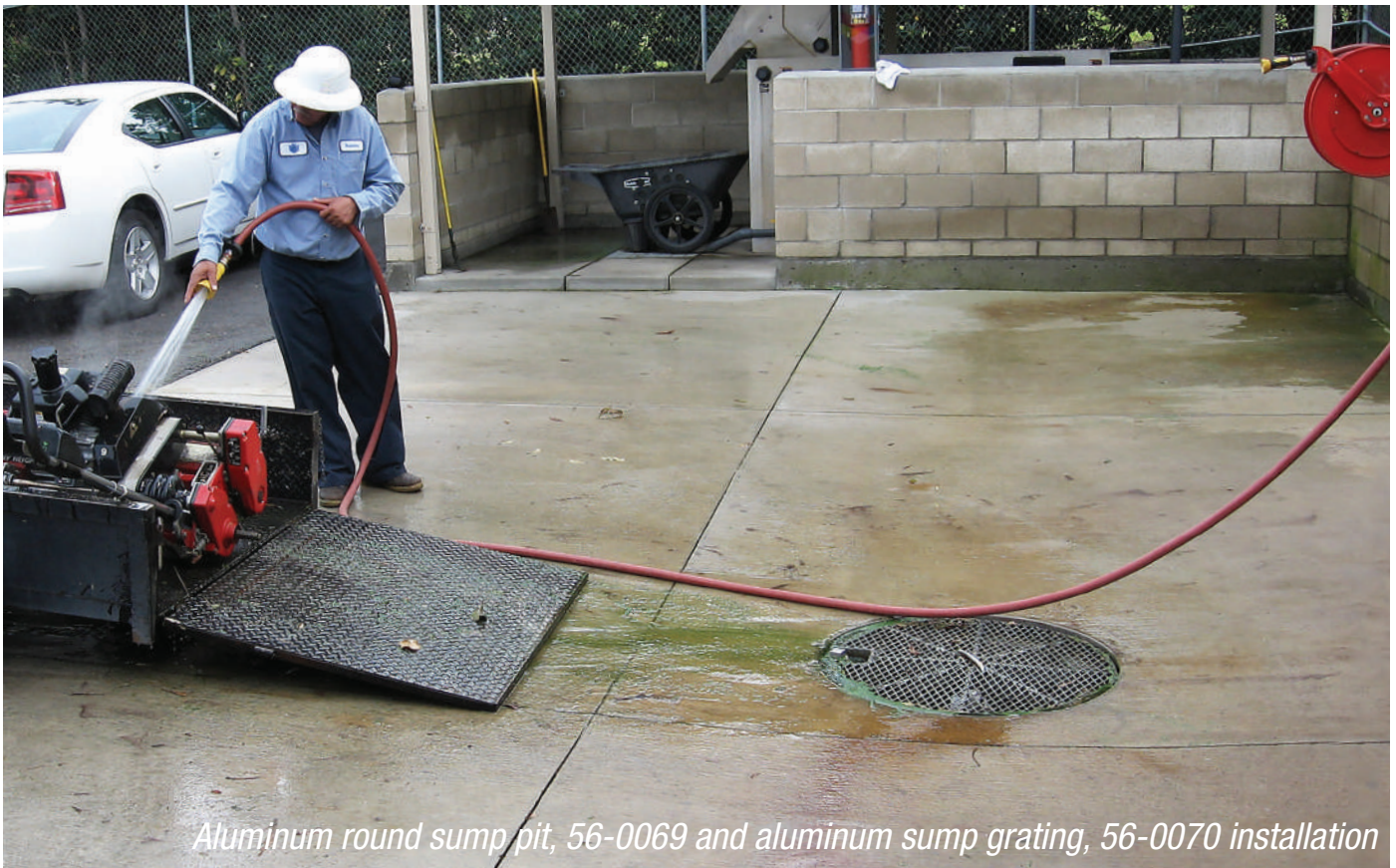
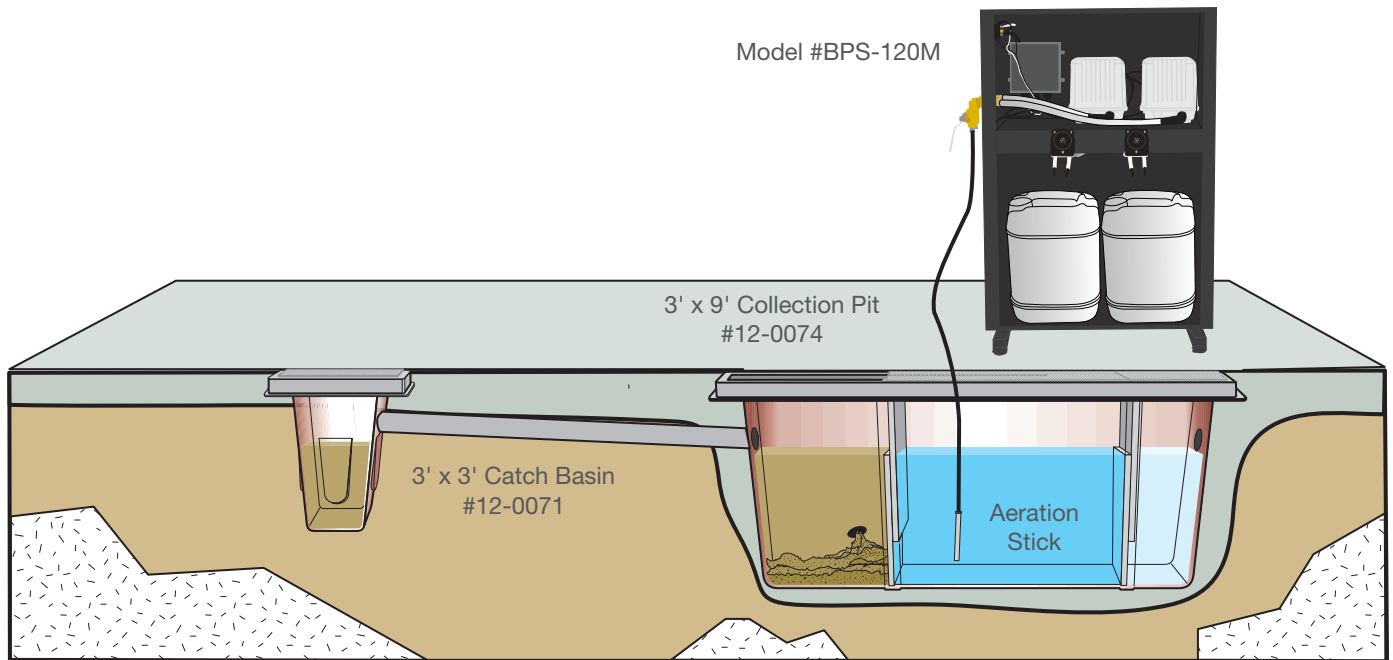
Features:

- 2 aeration pumps – linear pumps used to infuse air into water collection pits
- 2 peristaltic pumps – used to inject bacteria and nutrients
- 2 aeration stick assemblies – prevents water from stagnating in pit systems
- 115V single phase setting
- Internal timers allow end user to control the amount and frequency of the liquid microbes and nutrient doses. The BPS Series can be set to inject bacteria every minute, every hour or every day, whatever the situation dictates.

PART NUMBER	POWER REQUIREMENTS	DIMENSIONS (LxWxH)	SHIP WT.
BPS-120M	120V, 1Ø, 8.0A, 60Hz	30x22x39in.	150 lb.

Sample Pit Application with Biological Pit Enhancement System

BPS Series





Steel grating for pit, RC-0018-0001; and steel grating for pit with steel cover, RC-0018-0002; may be combined to have both open and closed sections for 3' x 9' fiberglass pits



Steel grating for pit, RC-0018-0001 and steel grating for pit with steel cover, RC-0018-0002

STEEL GRATING OPTIONS FOR PITS

PART NUMBER	PIT SIZE (FT.)	DESCRIPTION	UNIFORM LOAD RATING	SHIP WT.
RC-0018-0001*	Fits 3x9	Steel grating for pit	3,060 lb./ft. ²	546 lb.
RC-0018-0002*	Fits 3x9	Steel grating for pit with steel cover	3,060 lb./ft. ²	680 lb.
20-0480A18	Fits 3x3	Steel grating for pit, 2 sections	6,250 lb./ft. ² , H-20 load rated	250 lb.
20-0479A18	Fits 2x2	Steel grating for pit	6,660 lb./ft. ² , H-20 load rated	100 lb.

*May combine RC-0018-0001 and RC-0018-0002 to have both open and closed sections for the 3' x 9' pits.



www.mitm.com
 50 Mi-T-M Drive • Peosta, IA 52068
 ph 800-553-9053 • fax 563-556-1235
 corp@mitm.com

Distributed by:



WARNING: Cancer and Reproductive Harm - www.P65warnings.ca.gov.