

HS AND HVS UNITS
OPERATOR'S MANUAL FOR
PORTABLE WATER RECOVERY TRAILER



CAUTION

RISK OF INJURY!


READ MANUAL BEFORE OPERATING!

This manual is an important part of the Portable Water Recovery Trailer and must remain with the unit when you sell or rent it!


TABLE OF CONTENTS

INTRODUCTION	3
IMPORTANT SAFETY INSTRUCTIONS	3
PWR TRAILER FEATURES	4
PWR TRAILER FEATURES LISTING	5
GENERAL THEORY OF OPERATION	6
OPERATING INSTRUCTIONS.....	8
TROUBLE SHOOTING.....	13
STATEMENT OF WARRANTY	14
PWR TRAILER ASSEMBLY.....	16
TRAILER ASSEMBLY.....	18
WATER TANK WITH CAGE ASSEMBLY	20
HOSE REEL ASSEMBLY.....	22
OPTION / CLUTCH DRIVE (HX-0252 AND HX-0253).....	24
GENERATOR (850-0432)	26
DUAL FILTERS (WX-0129).....	28
WIRE SCHEMATIC FOR ALTERNATOR 120V (HX-0252)	30
WIRE DIAGRAM FOR ALTERNATOR 120V (HX-0252)	31
WIRE SCHEMATIC FOR CLUTCH 12V (HX-0252 AND HX-0253).....	32
WIRE DIAGRAM FOR CLUTCH 12V (HX-0252).....	33
WIRE DIAGRAM FOR PWR-10-0M10	34

WARNING

 **WARNING:** This product can expose you to chemicals including Lead, which is known to the State of California to cause cancer and birth defects or other reproductive harm. For more information go to www.P65Warnings.ca.gov

WARNING

 **WARNING:** This product can expose you to chemicals including carbon monoxide, which is known to the State of California to cause birth defects or other reproductive harm. For more information go to www.P65Warnings.ca.gov

INTRODUCTION

Congratulations on the purchase of your new portable water recovery (PWR) trailer package.

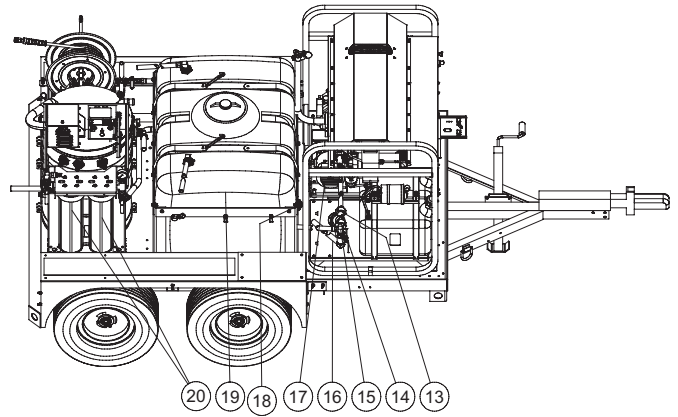
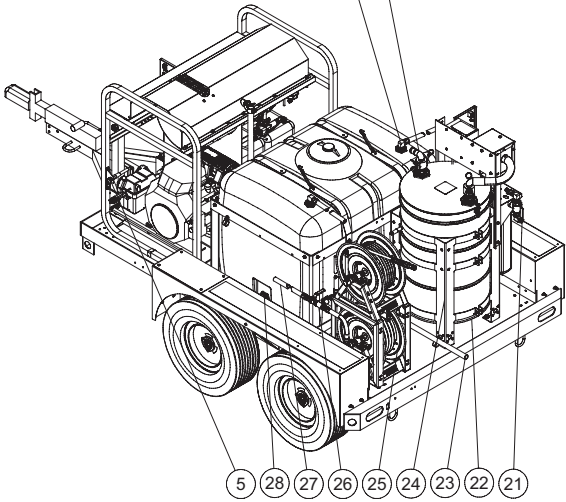
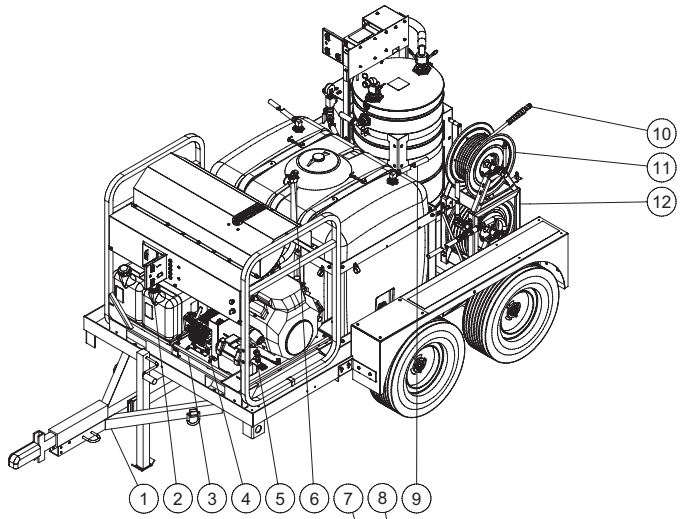
Your PWR trailer package includes a dual axle trailer with hot water pressure washer, water recovery system, hose reels, and 200 gallon water tank. A full understanding of how the pressure washer and the water recovery system work is required to operate this package safely. Please refer to the hot water pressure washer, water recovery vacuum system, and single/dual axle trailer manual for important safety, operating, maintenance and troubleshooting instructions for this package. The manual provides additional instructions and parts' breakdowns to each unit's individual operating instructions and parts list.

IMPORTANT SAFETY INSTRUCTIONS

Refer to those safety instructions listed in the individual hot water pressure washer, water recovery system, and dual axle trailer product manuals.

Package Includes	Description
AW-9000-0010	Dual Axle Trailer With Surge Brakes, Hose Reels, 200 Gallon Water Tank
PWR-10-0ME1 W/ WX-0129	Recovery Vacuum And Discharge Unit For Pwr Trailer
HS-3505-1MGH OR HVS-3505-1H6G W/ HX-0252	Hot Water Pressure Washer Unit For Pwr Trailer
PWR Trailer Weight	
Gross Trailer Weight (Lbs/Kg)	Tongue Weight (Lbs/Kg)
2900/1315 (Without Water)	400/185 (Without Water)
4900/2220 (Full Tanks)	500/230 (Full Tanks)
AW-9000-0010 Trailer Specifications	
Max Gross Trailer Weight	7000 Lbs
Wheels/Tires	Tandem ST225 R75 15 6 Lug Nut Wheels
Hitch	2" Ball (Other Styles Available C/F)
Outside Dimensions	156" X 81" X 68"
Bed Dimensions	102" X 60"
Tongue Length	54"
Jack	Center Of Tongue Flat Plate On Bottom
Lights	4 Wire System 12 Vdc
Safety Chains	Standard
Brakes	4 Wheel Surge
Tie-Downs	4 "D" Rings Standard
Water Storage	
	Capacity (GAL/L)
Water Tank	200/757
PWR-10-0ME1 Tank	55/208
Hose Reels	
	Specs
High Pressure Hose And Reel	100 Ft, 3/8", 4500 PSI, 250 °F
Low Pressure Hose And Reel	50 Ft, 3/4", 250 PSI
PWR-10-0ME1 W/ WX-0129 Specifications	
Refer To Specifications In PWR-10-0ME1 Manual	
HS-3505-1MGH Or HVS-3505-1H6G w/ HX-0252 Specifications	
Refer To Specifications In The Pressure Washer Manual As Well As Changes Below	
Generator	4.9 Kw Wired Directly Into PWR-10-0ME1 And Burner
Pump	Clutch Driven 4.2 GPM @ 3500 PSI Out Of Nozzle
Nozzle	4.5
Inlet "Y" Strainer	1" Plumbing, 80 Mesh

PWR TRAILER FEATURES



PWR TRAILER ASSEMBLY - HVS - FEATURES 040821 ATL

PWR TRAILER FEATURES LISTING

ITEM	DESCRIPTION
1.	Dual axle trailer with surge brakes
2.	Pump switch
3.	Hot water/gas driven/oil fired pressure washer
4.	Clutch driven pump
5.	Pressure washer outlet
6.	Exhaust pipe
7.	Pwr recycle line
8.	Vacuum inlet
9.	Tank fill inlet
10.	High pressure hose
11.	High pressure hose reel
12.	Hose reel stacking brackets
13.	1" Inline filter
14.	Inlet three-way-ball valve
15.	Direct feed line (top)
16.	Tank feed line (bottom)
17.	Alternator wired to burner and pwr unit
18.	Tank outlet
19.	200 Gallon tank
20.	Dual filters
21.	Pwr discharge port
22.	Pwr tank drain port
23.	200 Gal tank drain
24.	Pwr unit
25.	Low pressure hose reel
26.	Inlet valve assembly
27.	Direct feed line
28.	Tank drain valve
-	High pressure gun (not shown)
-	Berm (not shown)
-	Ss suction head (not shown)

GENERAL THEORY OF OPERATION

Reference flow schematic on next page.

TANK FEED: Connect a pressurized water source to the INLET GARDEN HOSE CONNECTION (1) on INLET HOSE REEL (2). Close DIRECT FEED LINE VALVE (3) and open TANK FILL VALVE (4) on the inlet plumbing manifold. With water supply on WATER STORAGE TANK (5) will fill.

When suitable amount of water is in the WATER STORAGE TANK (5), water supply can be shut-off. With INLET 3-WAY BALL VALVE (6) in the tank feed vertical position, water will fill INLET STRAINER (7) and flow into the PRESSURE WASHER (8).

DIRECT FEED: Connect a pressurized water source to the INLET GARDEN HOSE CONNECTION (1) on INLET HOSE REEL (2). Open DIRECT FEED LINE VALVE (3) and close TANK FILL VALVE (4) on the inlet plumbing manifold.

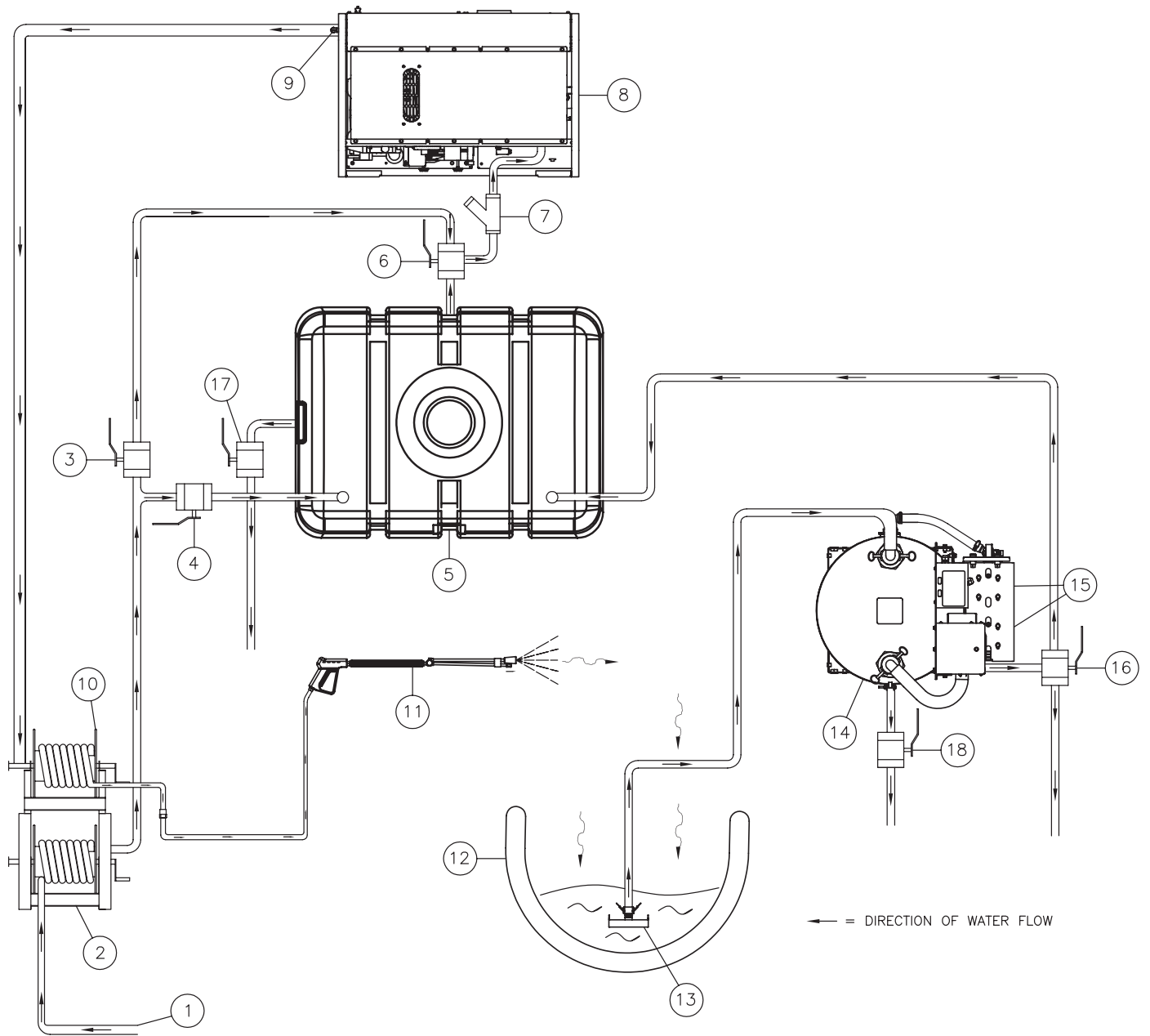
Turn INLET 3-WAY BALL VALVE (6) to direct feed position, valve handle will be horizontal. With water supply on, water will fill INLET STRAINER (7) and flow into the PRESSURE WASHER (8).

WASHING AND RECOVERY: High pressure water will leave the PRESSURE WASHER (8) at the HIGH PRESSURE OUTLET PORT (9) and flow through the jumper hose into the HIGH PRESSURE OUTLET REEL (10). From here, high pressure wash water will exit the system at the HIGH PRESSURE GUN AND NOZZLE (11).

A PORTABLE CONTAINMENT BERM (12) is placed down to collect the wash water. As the water is contained, the PWR SUCTION HEAD (13) from the PWR UNIT (14) suctions up the water. When enough water is in the PWR UNIT (14), an internal sump pump will automatically discharge water out of the PWR UNIT (14). From here water is forced through the DUAL CARTRIDGE FILTERS (15) to the FILTER OUTLET VALVE (16).

For re-use or storage of the filtered water the FILTER OUTLET VALVE (16) is turned to horizontal and water is sent back to WATER STORAGE TANK (5). For water discharge to another location, the FILTER OUTLET VALVE (16) is turned to the vertical position and water will be discharged from the garden hose fitting on the FILTER OUTLET VALVE (16).

DRAINING: WATER STORAGE TANK (5) can be drained by opening the TANK DRAIN VALVE (17) located at the side of the tank. Water will be discharged out the back of the trailer. The PWR UNIT (14) can be drained by opening the PWR UNIT DRAIN VALVE (18) at the back of the trailer.



OPERATING INSTRUCTIONS

TRAVEL:

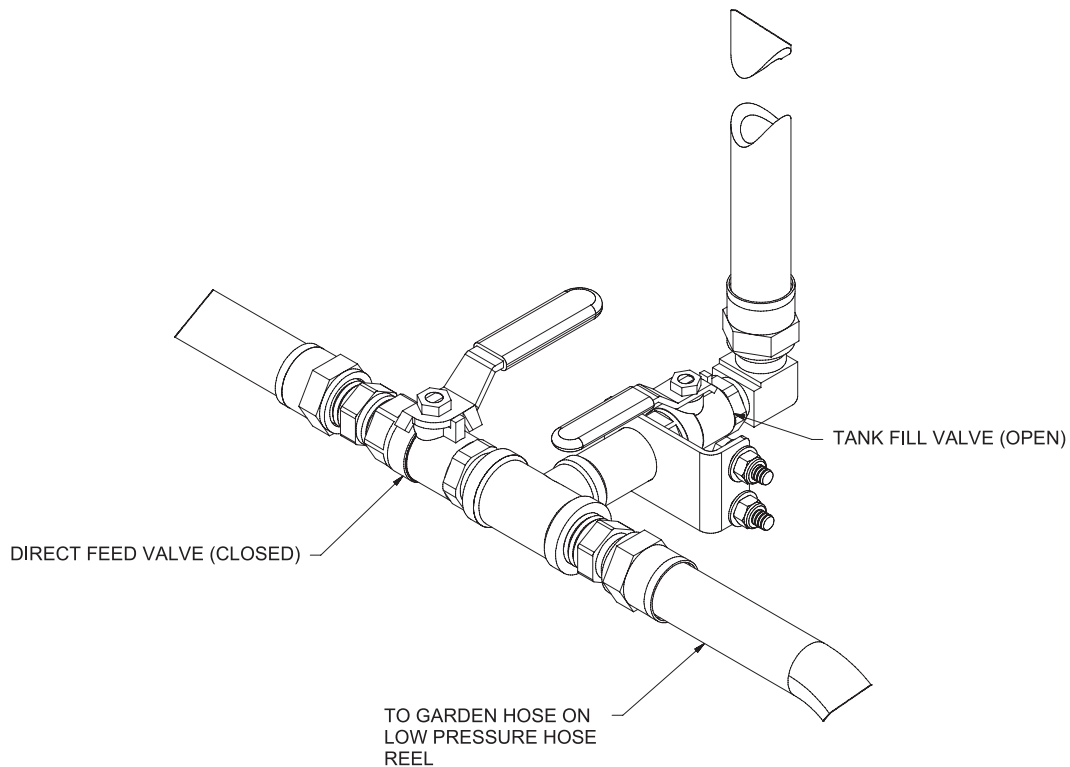
1. Follow travel guidelines outlined in the single/dual axle trailer manual provided with the unit. Make sure system is not running, and hoses are disconnected from outside sources before trying to move the trailer.
2. Take note if you are driving with full tanks or empty tanks as the change in weight of the water will change how the trailer is handled.
3. Make sure all equipment is properly secured. High pressure hose needs to be connected to the quick connect provided on the hose reel. Low pressure reel should be fully wound and tucked within the hose reel bracket. Both reels must be locked.

Vacuum hose, gun, and suction head can be transported within the PWR barrel if empty or need to be secured elsewhere.

4. Make sure vehicle and tow hitch capacity are rated to handle the PWR trailer when full of water or empty. Review gross trailer weight and tongue weight under specifications. At a minimum a Class III Hitch will be required for towing.

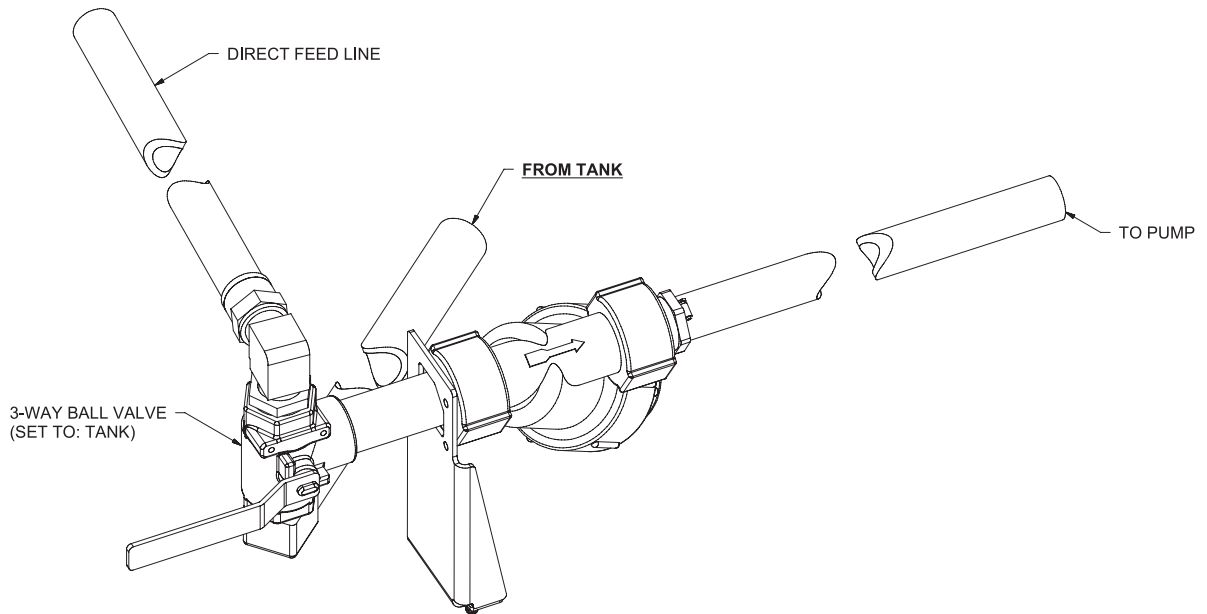
WATER SUPPLY:

1. Tank Fill: Connect garden hose from low pressure reel to water spigot. Open valve going from inlet tee to the 200 gallon tank. Close direct feed valve. Fill to the required volume and close valve tank fill valve to shut off water supply. Disconnect garden hose from water spigot before moving trailer.

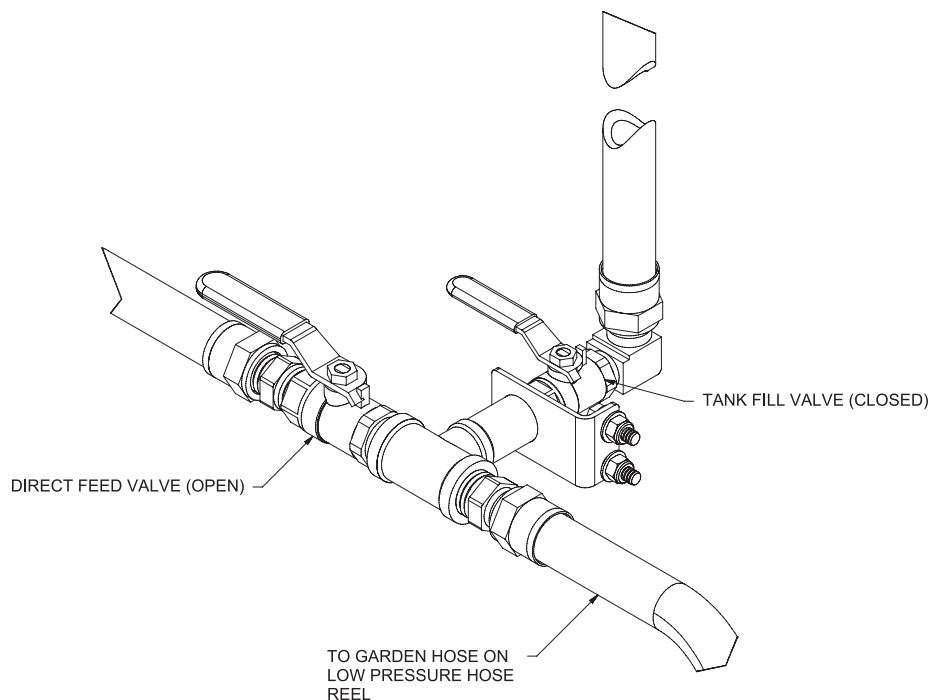


OPERATING INSTRUCTIONS

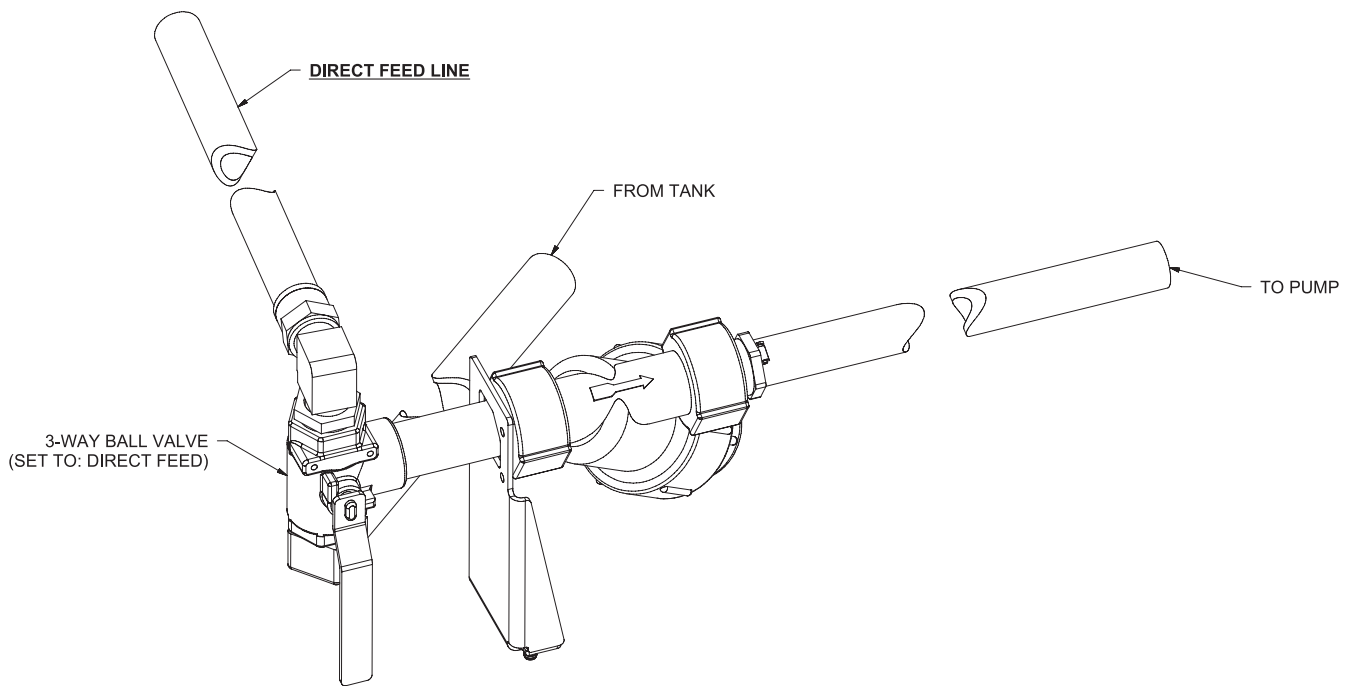
2. Tank Feed: Turn the 3-way ball valve on the inlet to the pressure washer to the horizontal position. Water should fill the inlet line, strainer, and pump. Pressure washer is ready to run, when water in the tank gets too low to feed the pressure washer, pump must be shut off until more water is added. Air may need to be relieved from the pump suction line by loosening the strainer drain plug, or the hose going to the pump until the pump is primed.



3. Direct Feed: Connect inlet garden hose to water spigot. Close tank fill valve going to the 200 gallon tank. Open direct feed valve to allow water to the 3-way ball valve on the skid unit. Now turn the 3-way ball valve on the inlet to the pressure washer to the down position. Pressure washer is ready for operation in direct feed mode. No water in tank is needed in this set-up.

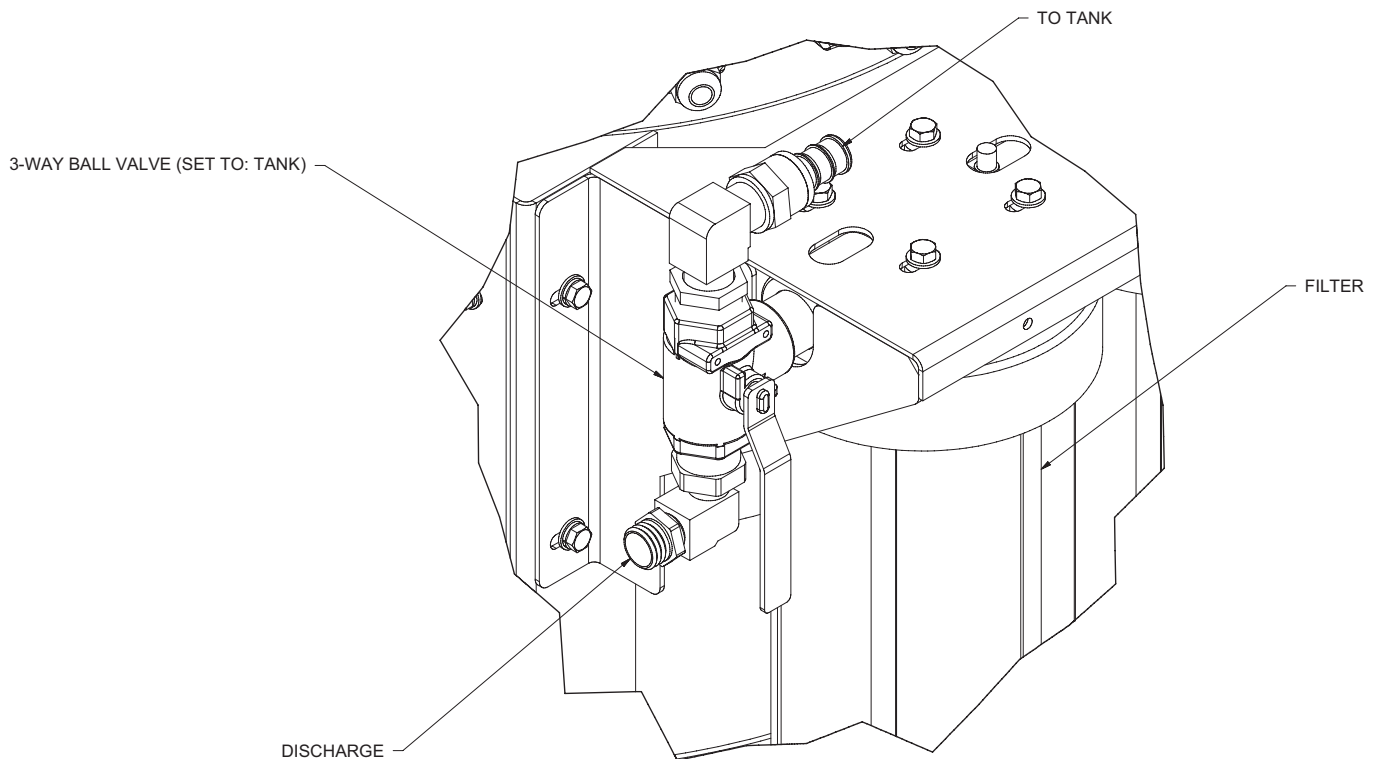


OPERATING INSTRUCTIONS



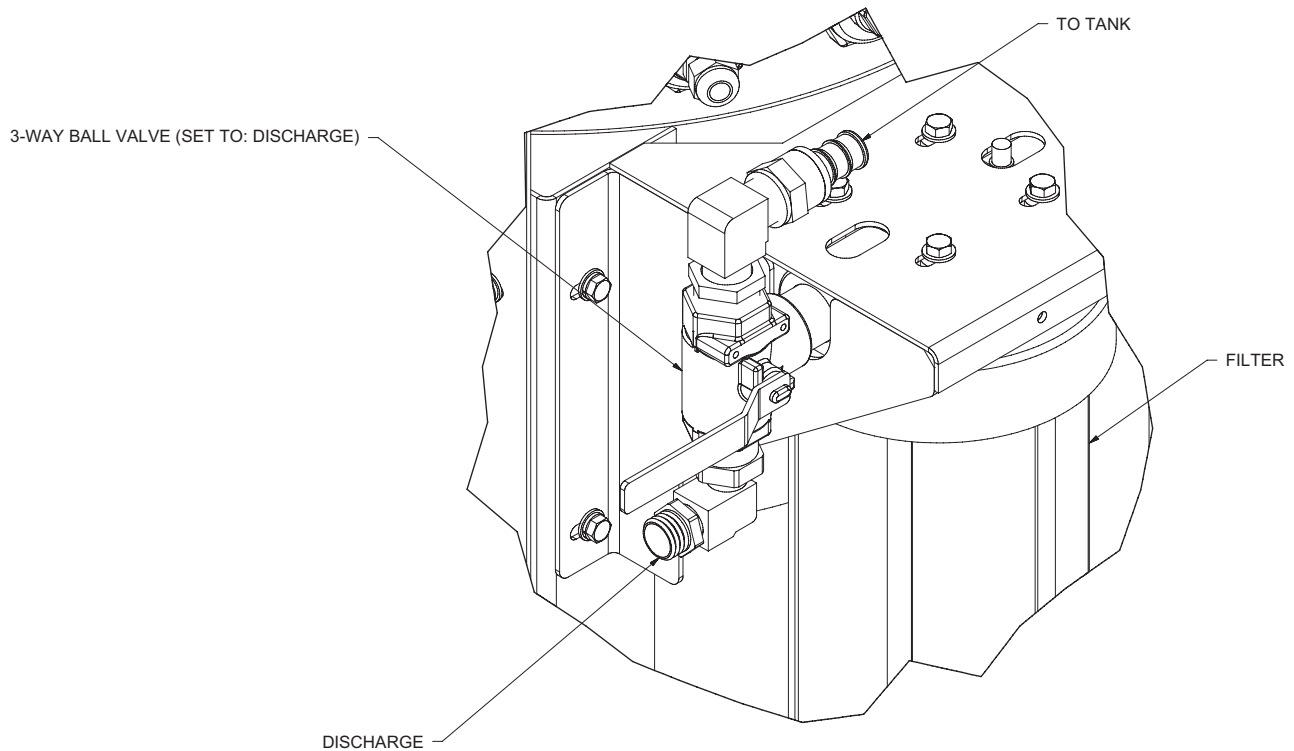
WATER RECOVERY ROUTING:

4. Tank Recycle: If water needs to be collected or recycled turn 3-way ball valve on filter outlet to the down position to send back to the tank. After the vacuum system has collected enough water, it will automatically send through the filtration system and into the 200 gallon tank. If the trailer is set up in tank feed the water will be recycled back to the pressure washer. If it is in direct feed mode, the water will simply be collected for disposal or can be used for wash water later if switched to tank feed. Do not overfill 200 gallon tank.



OPERATING INSTRUCTIONS

5. Discharge: If water does not need to be collected or recycled and can be discharged elsewhere, connect a garden hose to the 3-way ball valve on filter outlet and run the garden hose to where the water can be safely deposited. Turn the 3-way ball valve to the up position and water will be automatically filtered and discharged when enough water has been reclaimed to the system.



PRESSURE WASHER OPERATION:

1. Once the trailer is set up for tank feed or direct feed, follow all normal start-up procedures in the pressure washer manual, and make sure all switches are in off position. Connect gun to high pressure hose reel and attach correct nozzle. To by-pass high pressure hose reel, disconnect the quick connect on the outlet side of the pressure washer and attach other high pressure hose and gun. (Ensure pressure has been relieved in the high pressure hose reel by opening the gun while the pump is off.)
2. In addition to the normal operating requirements, your PWR trailer pressure washer unit comes with an additional pump switch to enable the PWR recovery system to function at all times without requiring water for the pressure washer by disabling the pump clutch.

In order to wash the pump switch on main control panel needs to be “on” after engine has started. This will allow the pressure washer pump to be controlled by the clutch. The pump will now only engage when trigger is opened and will disengage when the trigger is shut off. If washing is not required leave switch in the “off” position. NOTE: If the water supply gets cut off to the unit, the clutch can still engage the pump. Turn pump switch to “off” if this situation arises or shut down engine; do not try to wash until water source has been restored.

3. For hot water washing follow instructions detailed in the pressure washer manual. NOTE: If a vacuum recovery surface cleaner is being used with the PWR system, the hot reclaimed water may cause damage to the PWR system. Do not use water over 130 °F in this set-up. (Under normal recovery set-up with berm and suction head the water has time to cool before pick-up and up to 200°F wash water is okay to use.)

RECOVERY SYSTEM OPERATION:

1. Ensure all switches are in the off position. Instead of plugging into a 120V outlet, the recovery system comes wired into the generator of the pressure washer. Once the pressure washer engine is started 120V power should be available to the PWR control panel to operate the vacuum and automatic sump pump.
2. Follow all other operation procedures found in the PWR manual. If a situation does arise where no washing is required but PWR operation is required keep the pump switch “off” on the pressure washer control panel and the engine is okay to run as long as needed without damaging the pressure washer pump.

OPERATING INSTRUCTIONS

SHUT-DOWN:

1. Follow standard shut-down procedures outlined in the pressure washer and PWR manual.
2. Engine can be left on to use the PWR system to vacuum out the 200 gallon tank, as long as pump switch is turned "off" when done with washing.
3. When done with vacuum system, flip all switches to the off position and engine can be turned off. Make sure engine is no longer running when moving trailer.
4. Make sure all materials are disposed of according to Federal and State EPA standards.

MAINTENANCE

1. Follow all maintenance procedures outlined in the PWR, pressure washer, and trailer manual as well as the instructions below.
2. After each use:
 - a. Empty strainer basket on inlet to the pump.
 - b. Clean out both filter cartridges on the vacuum unit.
 - c. Check inlet water strainer on garden hose and remove any debris.
3. Periodic maintenance: Follow standard procedures outlined in the individual manuals.

WINTERIZING AND STORAGE:

Follow winterizing and storage recommendations detailed in the pressure washer and PWR manual.

In addition, drain the water tank and inlet plumbing to pressure washer by using the plug on the strainer and the drain valve on the side of the water tank. Fully uncoil both hose reels and allow the hoses to gravity drain.

TROUBLE SHOOTING

Follow troubleshooting guides detailed in the hot water pressure washer and PWR manual. See additional guide below for other possible symptoms that might arise with this packaged set-up.

Symptom	Probable Cause	Remedy
No discharge water from nozzle when gun is triggered.	Pump switch is "off"	Turn pump switch "on"
	In adequate water supply	Make sure tank has enough water for tank feed, or direct feed line is hooked into a pressurized source that can keep up with demand.
	Clutch malfunction.	Check voltage going to clutch. Make sure clutch is engaging correctly by jumping pressure switches. If caused by bad pressure switch, replace switch. Repair or replace clutch.
Low or fluctuating pressure and flow.	In adequate water supply	Make sure tank has enough water for tank feed, or direct feed line is hooked into a pressurized source that can keep up with demand.
	Air lock in suction plumbing	Loosen strainer plug or hose going to pressure washer pump to allow air to escape until pump is primed. If connected to water source, can switch to direct feed to help prime pump.
	Debris in inlet plumbing	Clean out inlet strainer and garden hose strainer on inlet hose reel. Clean suction plumbing if still needed.
Dirty water in 200 gallon tank.	Filters need replaced or cleaned.	Switch to direct feed. Empty and clean filters and water tank, start with clean water in tank.
	Water in tank has been re-used too many times.	After 3 or 4 cycles through the system water may become dirty as smaller particles that pass through the filters may begin to accumulate. Clean out tank and fill with clean water. Or switch to direct feed.
PWR unit will not turn on.	Generator malfunction	Check voltage. Replace or repair generator or belts.

STATEMENT OF WARRANTY

STATEMENT OF WARRANTY

Read the statement of warranty outlined in the hot water pressure washer, PWR, and trailer manual. These apply for the PWR trailer package.

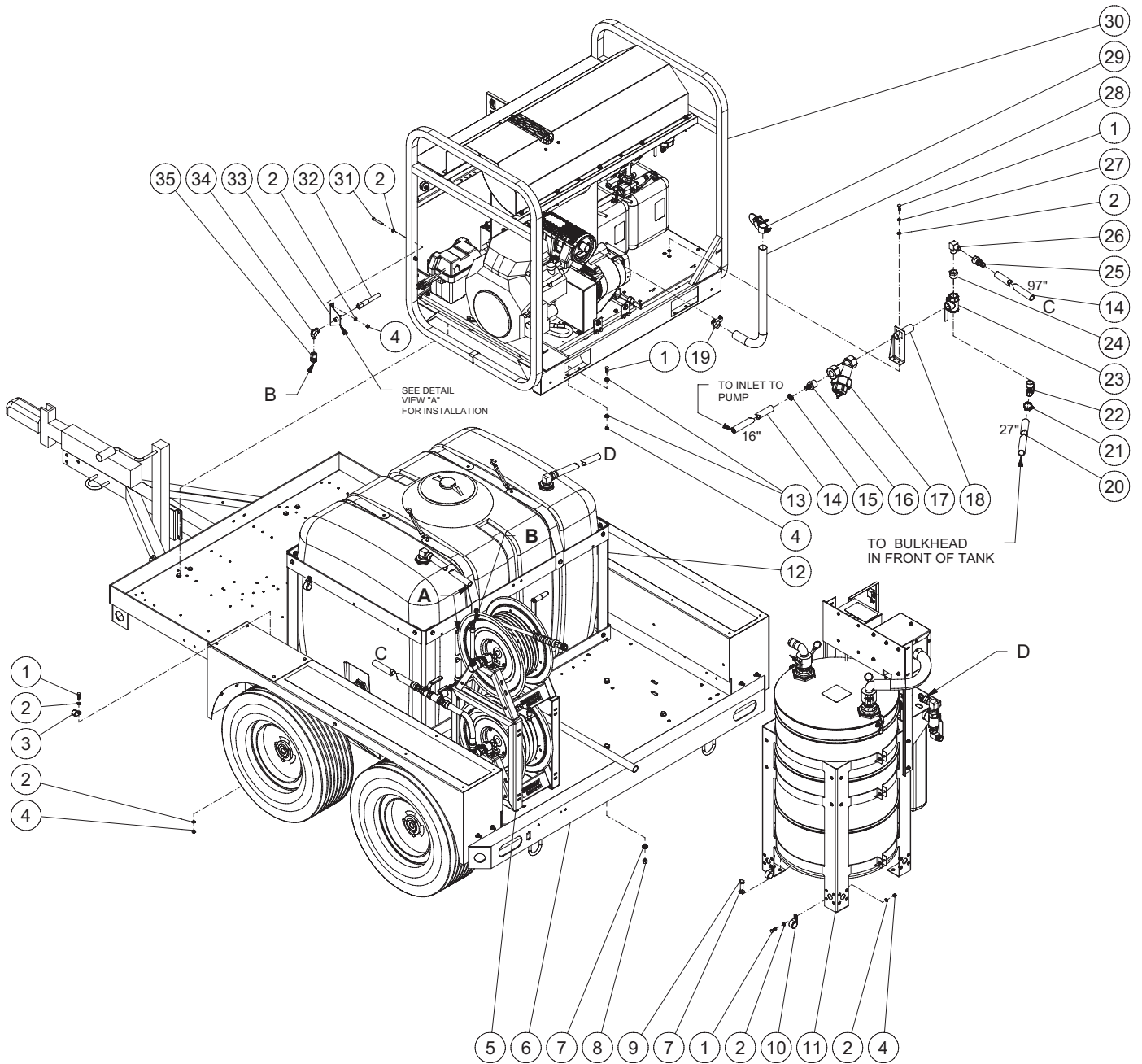
REPLACEMENT PARTS

These replacement part breakdowns are for the unique assemblies associated with the hot water pressure washer, PWR, as well as the trailer assemblies.

The HX-0252 breakdowns will show the changes to the standard unit for the pump/clutch, unloader, alternator and control box assembly and there is no float tank on the unit. All other assemblies should be shown in the standard Hot water parts list sent with the unit.

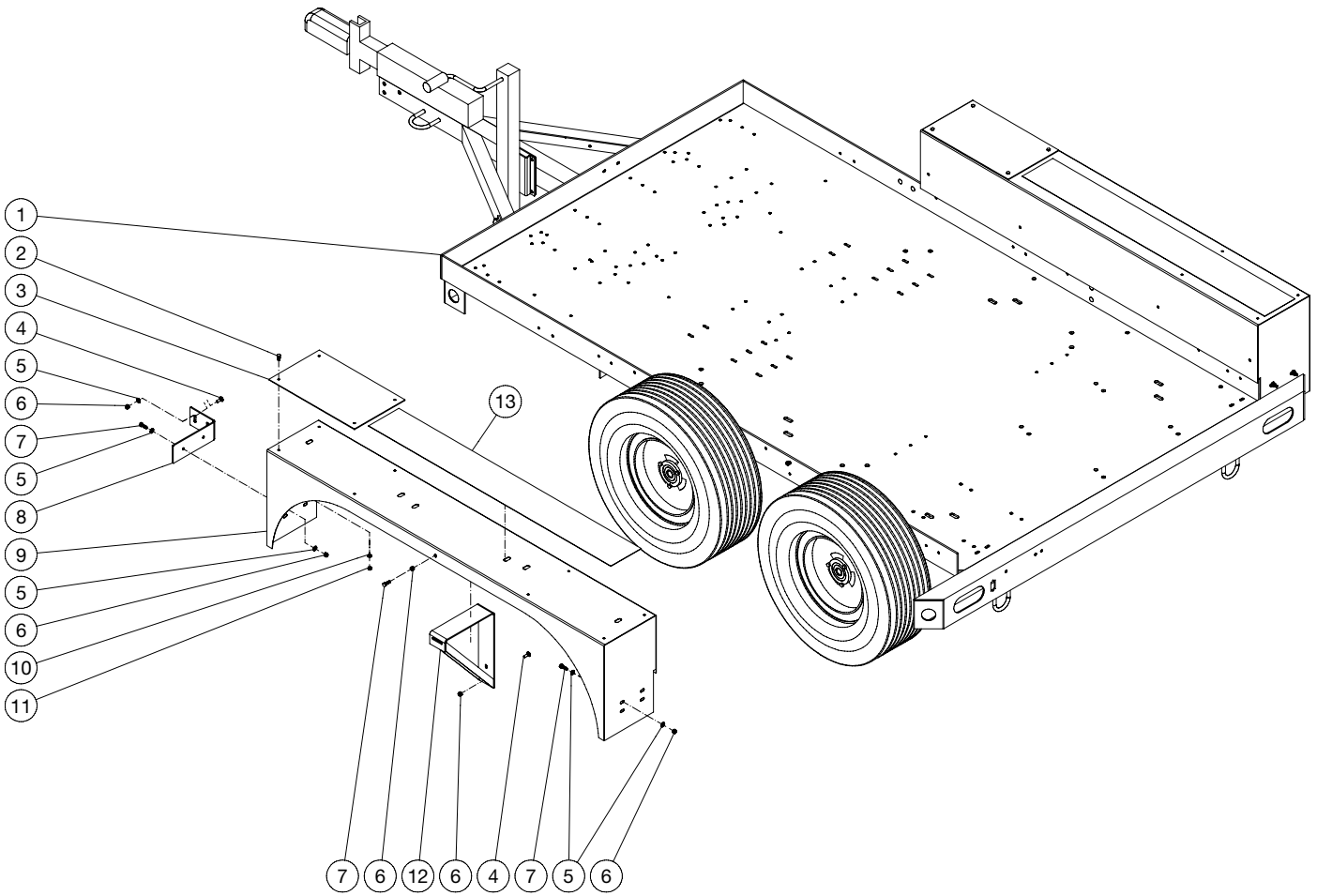
The WX-0129 breakdown below shows the plumbing outside of the PWR-10-0ME1. For other assemblies refer to the standard manual that is sent with the unit.

PWR TRAILER ASSEMBLY



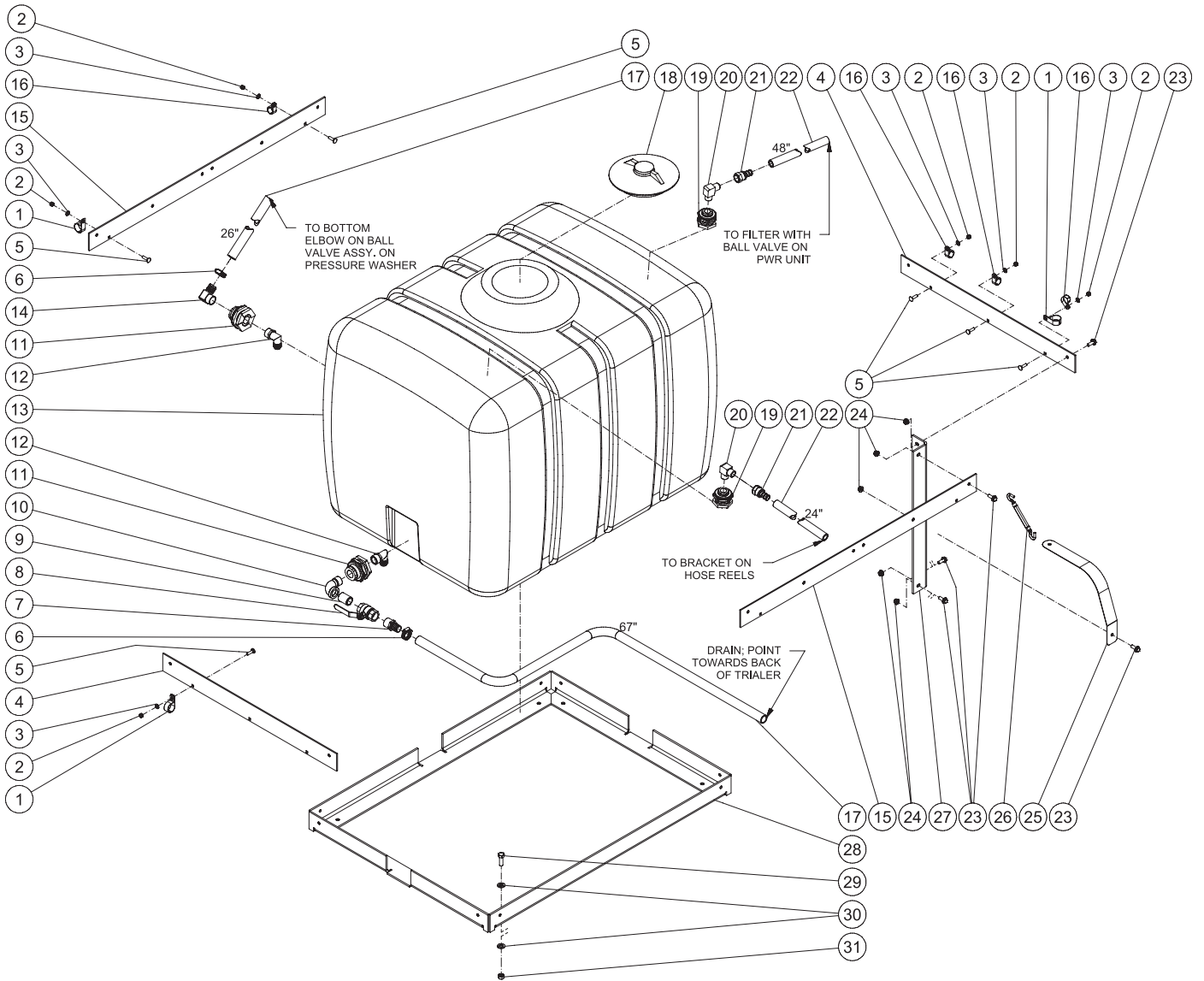
TRAILER ASSEMBLY			
ITEM	TITLE	PART #	QTY
1	BOLT	27-0067	13
2	WASHER	28-0003	12
3	CLIP	33-0291	1
4	LOCKNUT	30-0157	13
5	HOSE REEL ASSY.	N/A SEP.	1
6	TRAILER ASSEMBLY	N/A SEP.	1
7	WASHER	28-0006	8
8	NUT	30-0163	4
9	BOLT	27-0218	4
10	CLIP	42-0055	2
11	PWR W/DUAL FILTERS	N/A SEP.	1
12	WATER TANK W/ CAGE ASSEMBLY	N/A SEP.	1
13	WASHER	28-0022	16
14	HOSE *(TWO FEET REQUIRED)	15-0033	1
15	HOSE CLAMP	42-0003	1
16	BARB	23-0484	1
17	WATER FILTER	19-0247	1
18	1" PIPE BRACKET	20-0951A18	1
19	EXHAUST CLAMP	45-0082	1
20	HOSE	15-0290	1
21	HOSE CLAMP	42-0018	1
22	HOSE BARB	23-0483	1
23	BALL VALVE	22-0321	1
24	REDUCER	23-0473	1
25	HOSE BARB	23-0358	1
26	ELBOW	23-0364	1
27	LOCKWASHER	29-0007	2
28	EXHAUST PIPE	45-0120	1
29	RAIN CAP	33-0441	1
30	HS/HVS UNIT ASSY.	N/A SEP.	1
-	HDS UNIT ASSY.	N/A SEP.	1
31	BOLT	27-0072	2
32	HP HOSE	N/A	1
33	WATER OUTLET BRACKET	N/A	1
34	ELBOW	24-0105	1
35	QUICK CONNECT SOCKET	N/A	1
*MUST ORDER IN ONE FOOT LENGTHS			

TRAILER ASSEMBLY



TRAILER ASSEMBLY 121818 MLK			
TRAILER ASSEMBLY			
ITEM	DESCRIPTION	PART #	QTY
1	TANDEM AXLE W/SURGE BRAKES	61-0006	1
2	BOLT	27-0015	8
3	STEP	56-0066	2
4	BOLT	31-2015	8
5	WASHER	28-0003	20
6	LOCKNUT	30-0157	18
7	BOLT	27-0067	10
8	BRACKET	20-1064A01	2
9	FENDER	20-1049A18	2
10	WASHER	28-0002	8
11	LOCKNUT	30-0155	8
12	BRACKET	20-1206A01	2
13	GRIP TAPE *(FOUR FEET REQUIRED)	33-0506	2
*MUST ORDER IN ONE FOOT LENGTHS			

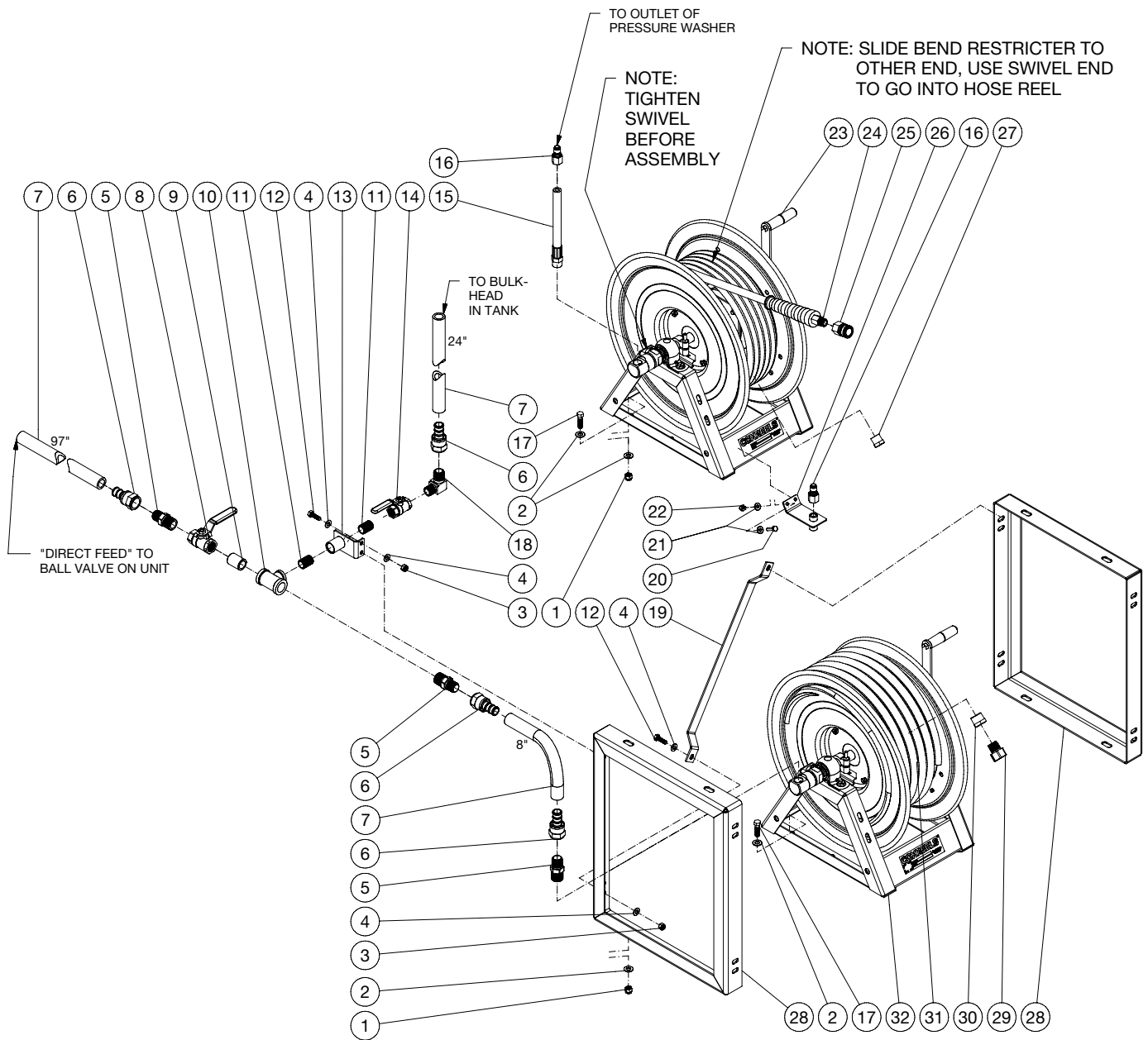
WATER TANK WITH CAGE ASSEMBLY



WATER TANK WITH CAGE

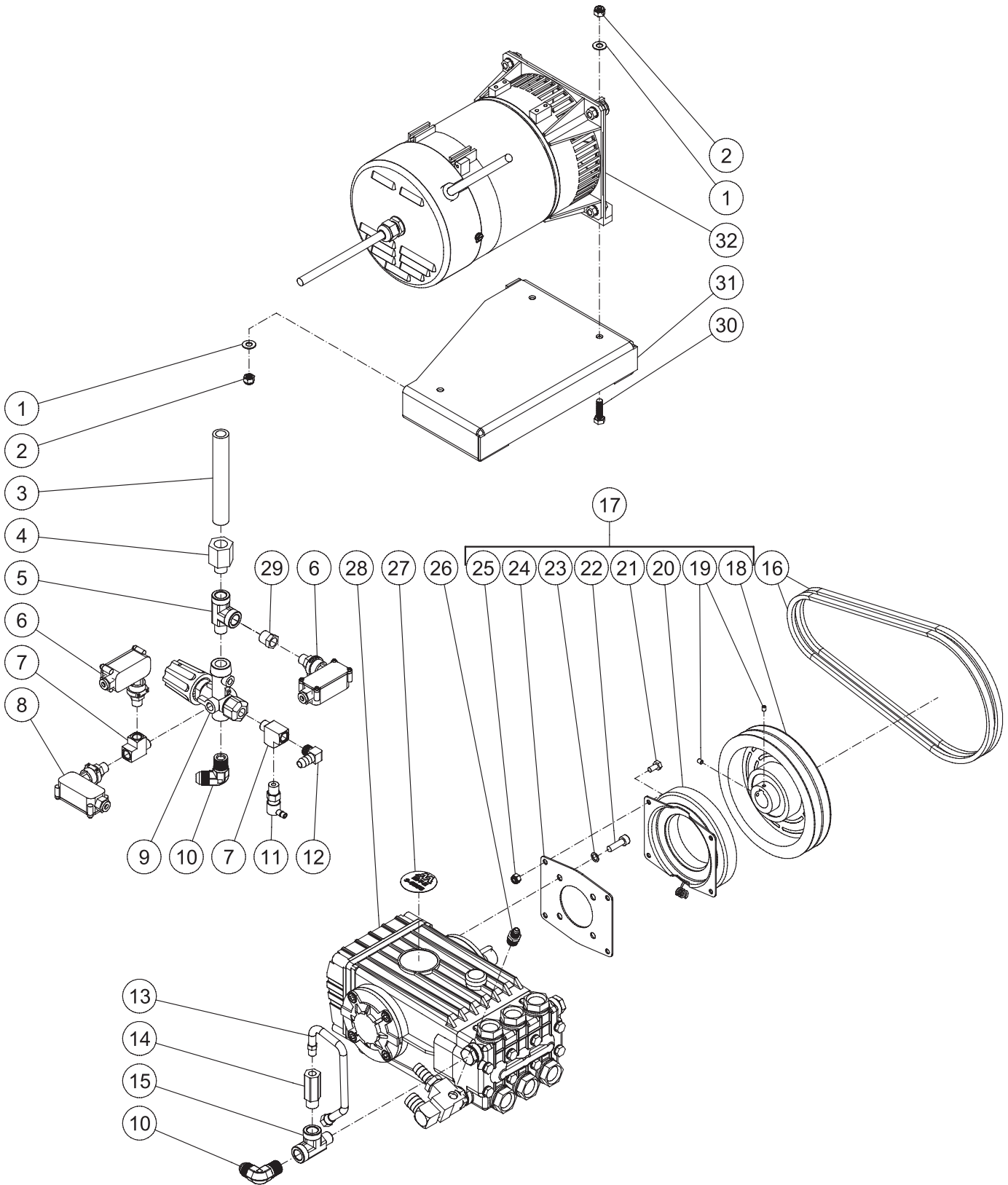
ITEM	DESCRIPTION	PART #	QTY
1	CLIP	42-0055	3
2	LOCKNUT	30-0157	6
3	WASHER	28-0003	6
4	BRACE	20-1153A18	2
5	BOLT	31-0050	6
6	HOSE CLAMP	42-0018	2
7	HOSE BARB	23-0091	1
8	BALL VALVE	22-0344	1
9	NIPPLE	23-0094	1
10	ELBOW	23-0088	1
11	BULKHEAD (INC. 25-042 GASKET)	55-1286	2
12	PLASTIC ELBOW	55-1293	2
13	TANK	12-0139	1
14	HOSE BARB	23-0483	1
15	TOP RAIL	20-1045A18	2
16	CLIP	33-0291	4
17	HOSE *(EIGHT FEET REQUIRED)	15-0290	1
18	LID	33-0492	1
19	BULKHEAD	55-0010	2
20	ELBOW	23-0364	2
21	HOSE BARB	23-0358	2
22	HOSE *(SIX FEET REQUIRED)	15-0033	1
23	BOLT	27-8923	20
24	NUT	30-3030	20
25	TANK STRAPS	20-1154A18	4
26	TURNBUCKLE	31-5035	2
27	CORNER BRACKET	20-1044A18	4
28	FRAME BASE	20-1151A18	1
29	BOLT	27-0218	4
30	WASHER	28-0006	8
31	NUT	30-0163	4
*MUST ORDER IN ONE FOOT LENGTHS			

HOSE REEL ASSEMBLY



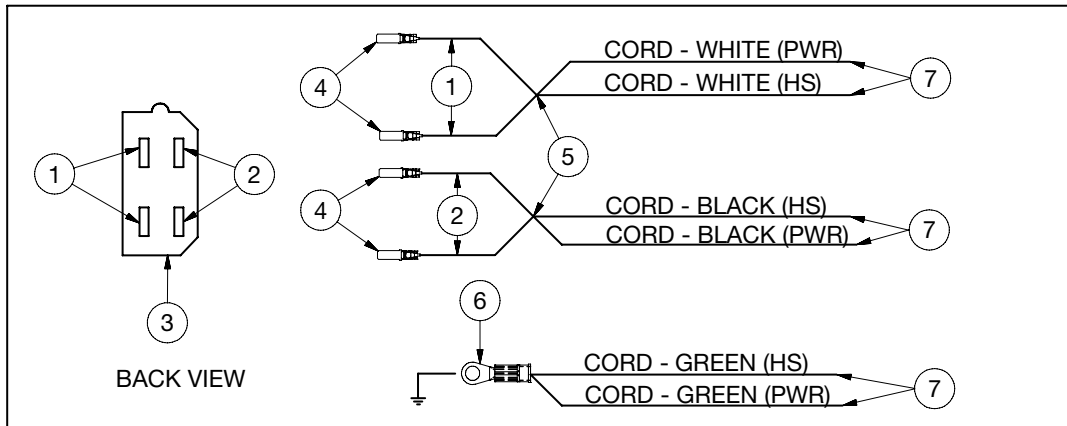
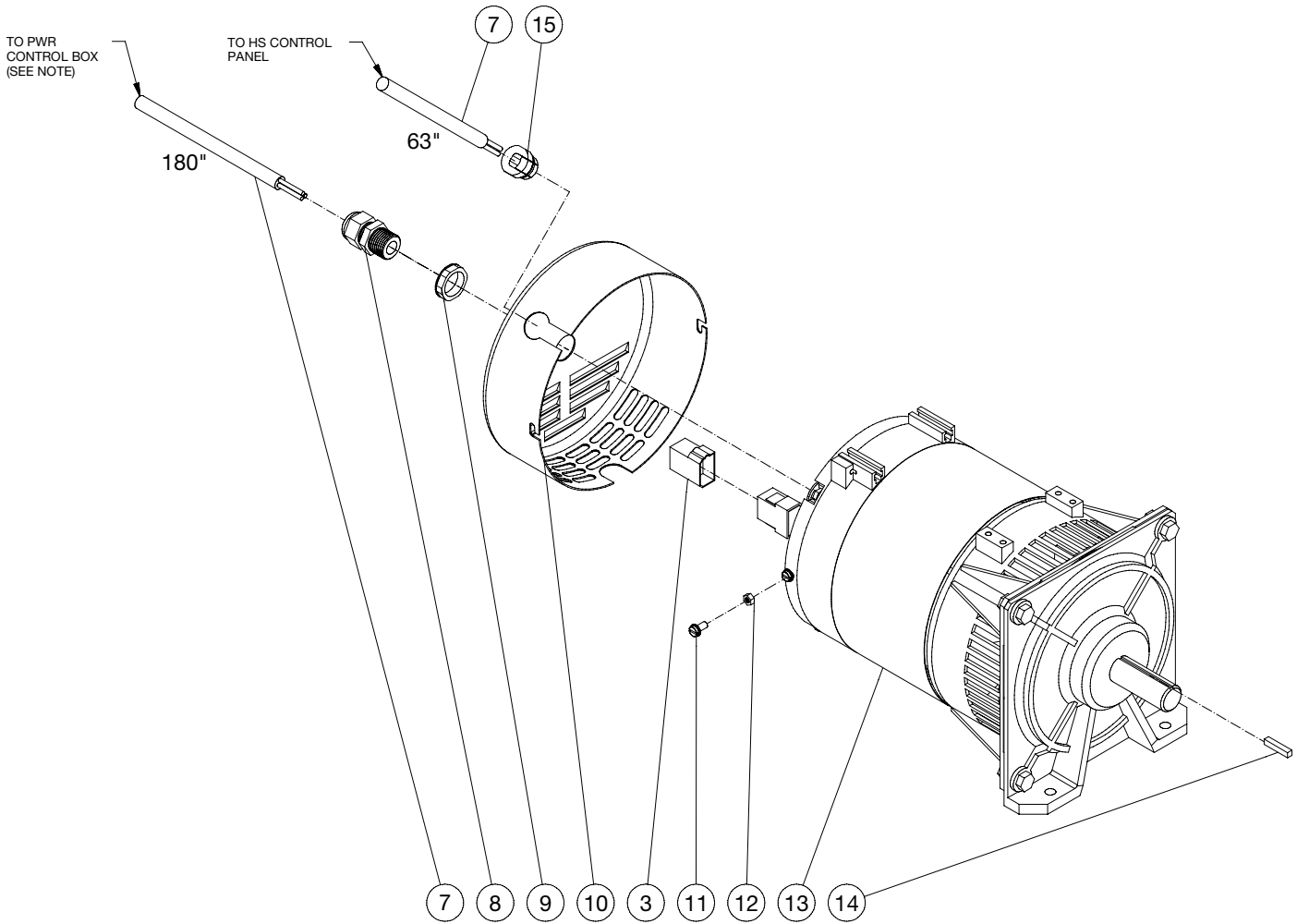
HOSE REEL ASSEMBLY			
ITEM	DESCRIPTION	PART #	QTY
1	LOCKNUT	30-0159	8
2	WASHER	28-0004	18
3	LOCKNUT	30-0157	4
4	WASHER	28-0003	8
5	NIPPLE	23-0362	3
6	HOSE BARB	23-0358	4
7	HOSE *(NINE FEET REUQUIRED)	15-0033	1
8	BALL VALVE	22-0279	1
9	NIPPLE	23-0003	1
10	TEE	23-0009	1
11	NIPPLE	23-0019	2
12	BOLT	27-0067	4
13	WATER INLET BRACKET	13-0131A01	1
14	BALL VALVE	22-0278	1
15	PRESSURE HOSE	15-0353	1
16	QUICK CONNECT	17-0006	2
17	BOLT	27-0118	8
18	ELBOW	23-0363	1
19	BACK BRACE	20-1405A18	1
20	BOLT	27-0016	2
21	WASHER	28-0002	4
22	LOCKNUT	30-0155	2
23	HIGH PRESSURE HOSE REEL	50-0215	1
-	REPLACEMENT SWIVEL FOR 50-0215	50-0217	1
-	REPLACEMENT SEAL KIT FOR 50-0217	70-0655	1
24	HOSE	15-0161	1
25	QUICK CONNECT SOCKET	17-0004	1
26	WATER OUTLET BRACKET	20-1168A18	1
27	REDUCER	24-0282	1
28	HOSE REEL BRACKET	20-1404A18	2
29	SWIVEL	23-0095	1
30	BUSHING	23-0023	1
31	GARDEN HOSE *(FIFTY FEET REQUIRED)	15-0006	1
32	LOW PRESSURE HOSE REEL	50-0214	1
-	REPLACEMENT SWIVEL FOR 50-0214	50-0216	1
-	REPLACEMENT SEAL KIT FOR 50-0216	70-0654	1
-	INLET FILTER - WASHER W/SCREEN (NOT SHOWN)	19-0001	1
*MUST ORDER IN ONE FOOT LENGTHS			

OPTION / CLUTCH DRIVE (HX-0252 AND HX-0253)



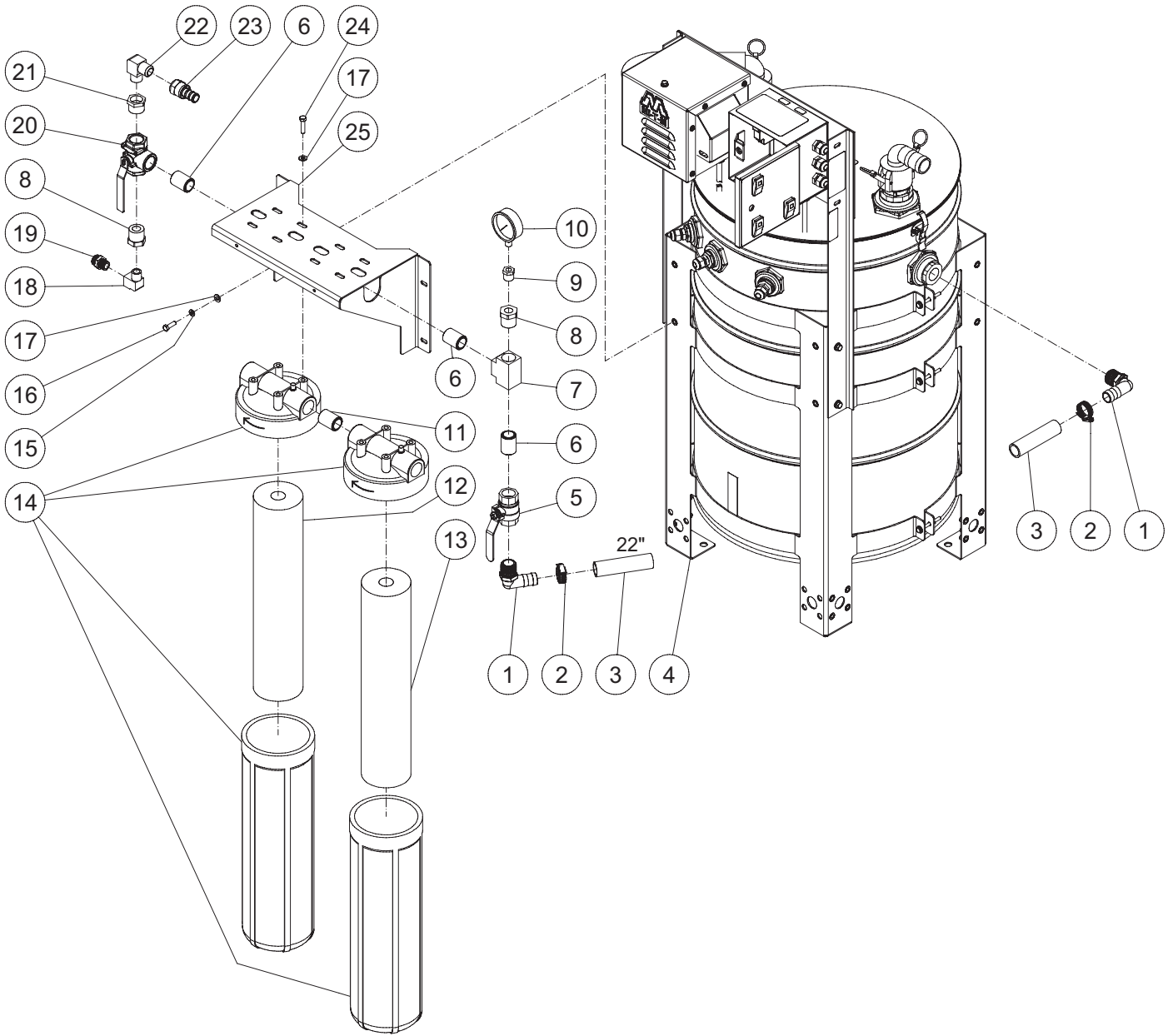
OPTION/CLUTCH DRIVE HX-0252/3 012215 MLK			
OPTION / CLUTCH DRIVE			
ITEM	DESCRIPTION	PART #	QTY
1	WASHER	28-0003	3
2	LOCKNUT	30-0157	3
3	PIPE NIPPLE	24-0246	1
4	REDUCER	24-0048	1
5	STREET TEE	23-0058	1
6	PRESSURE SWITCH	22-0243	2
7	TEE	23-0127	2
8	PRESSURE SWITCH	22-0171	1
9	UNLOADER	850-0252	1
10	ELBOW	24-0092	2
11	HEAT DUMP VALVE	22-0408	1
12	ELBOW	23-0119	1
13	EASY START HOSE	15-0140	1
14	EASY START VALVE	22-0242	1
15	TEE 3/8" STREET - STEEL	23-0058	1
16	BELT	11-0023	2
17	CLUTCH	10-0156	1
18	SHEAVE	N/A	1
19	SET SCREW	27-8895	2
20	CLUTCH	N/A	1
21	BOLT	27-0014	4
22	BOLT	27-8194	4
23	LOCKWASHER	29-0154	4
24	CLUTCH MOUNTING PLATE	N/A	1
25	LOCKNUT	30-0155	4
26	UNION	23-0247	1
27	DECAL - PUMP	34-2290	1
28	PUMP	3-0203	1
29	REDUCER	23-0017	1
30	BOLT	27-0068	3
31	ALTERNATOR HAT	20-1341A18	1
32	GENERATOR	850-0432	1
-	QC 3/8M X 3/8 PLUG SS	17-0005	1
-	NOZZLE 25040 QC (HX-0253)	18-0400	1
-	NOZZLE 00045 QC	18-0402	1
-	NOZZLE 15045 QC	18-0403	1
-	NOZZLE 25045 QC (HX-0252)	18-0404	1
-	NOZZLE 40045 QC	18-0405	1

GENERATOR (850-0432)



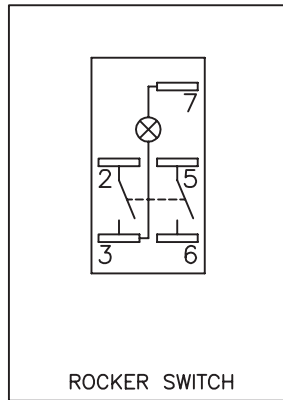
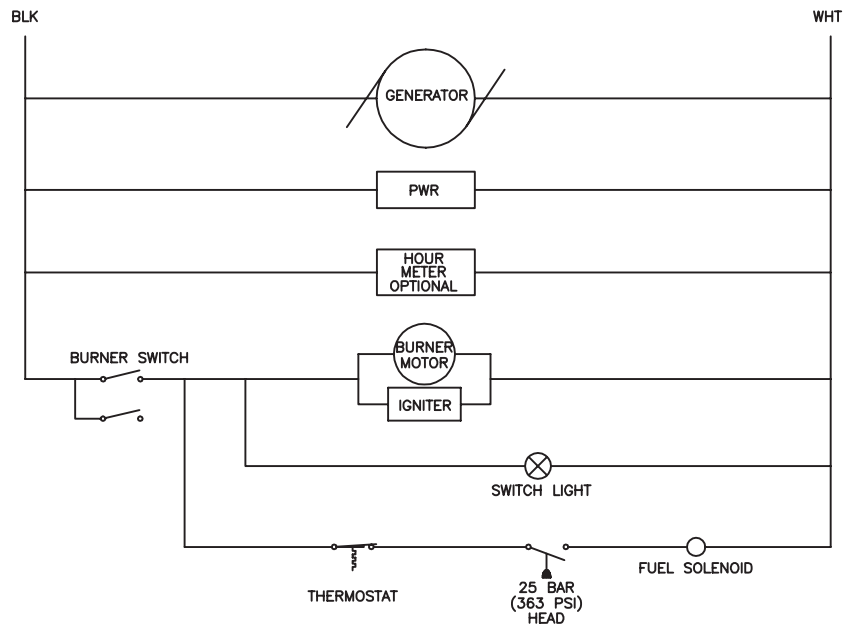
GENERATOR			
ITEM	DESCRIPTION	P/L	QTY
1	WIRE 12 GA - WHITE *(ONE FOOT REQUIRED)	32-0452	2
2	WIRE 12 GA - BLACK *(ONE FOOT REQUIRED)	32-0091	2
3	CONNECTOR - MALE END (W/ALTERNATOR)	N/A	1
4	TERMINAL SPADE - 10GA	32-0878	4
5	CRIMP SPLICE	32-0417	2
6	TERMINAL RING	32-0099	1
7	CORD *(TWENTY ONE FEET REQUIRED)	32-0440	1
8	STRAIN RELIEF	32-0437	1
9	ELECTRICAL LOCKNUT	32-0108	1
10	END COVER - CAP ONLY	N/A	1
11	SCREW	27-9593	2
12	NUT	30-6001	2
13	GENERATOR	32-1166	1
14	KEY	43-0085	1
15	BUSHING	9-0045	1
*MUST ORDER IN ONE FOOT LENGTHS			

DUAL FILTERS (WX-0129)

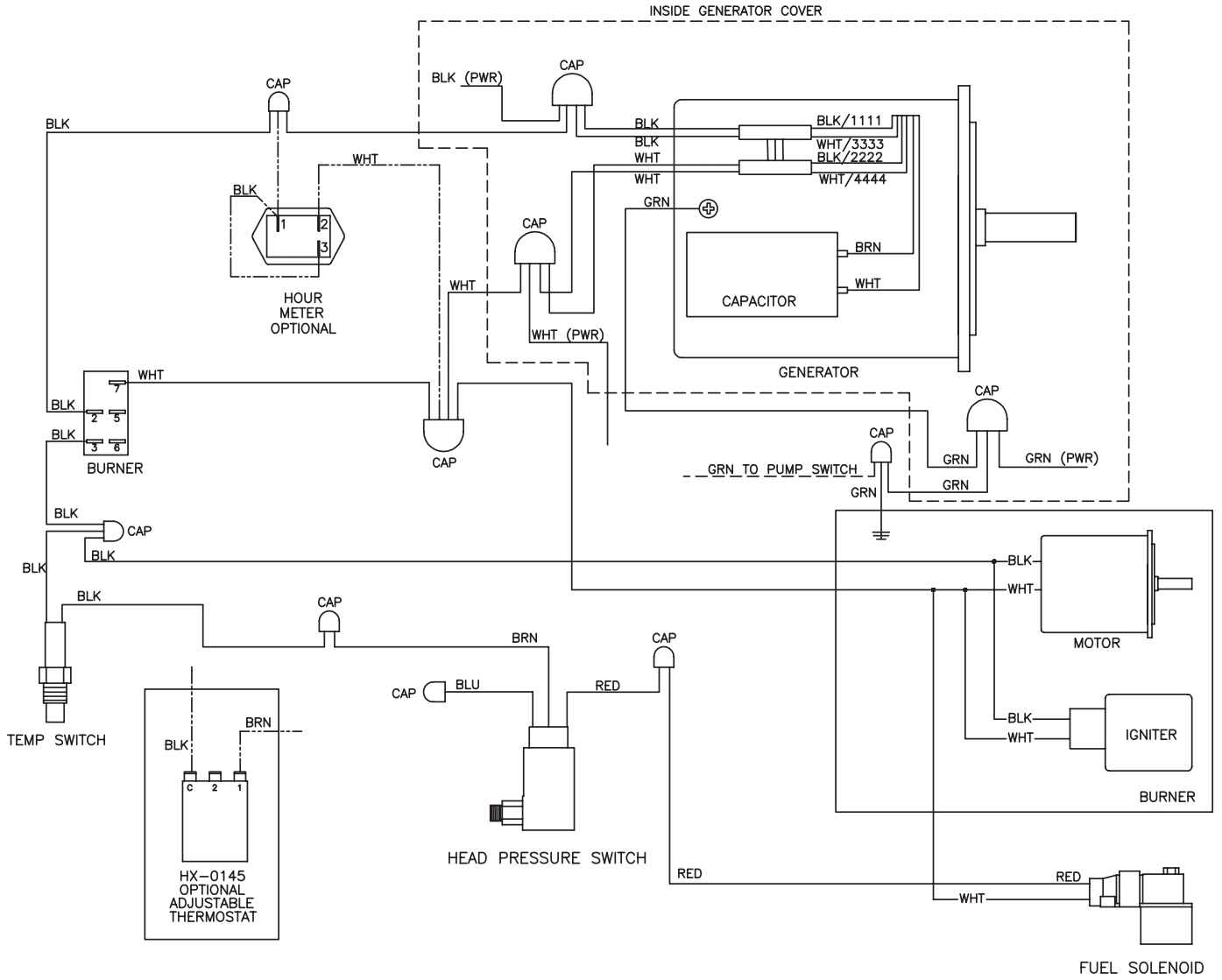


DUAL FILTERS			
ITEM	TITLE	PART #	QTY
1	ELBOW	55-1293	2
2	HOSE CLAMP	42-0018	2
3	HOSE *(TWO FEET REQUIRED)	15-0290	2
4	PORTABLE WASH RECOVERY UNIT	N/A SEP.	1
5	BALL VALVE	22-0344	1
6	NIPPLE	23-0094	3
7	BRASS TEE	23-0149	1
8	REDUCER	23-0226	2
9	REDUCER	23-0056	1
10	PRESSURE GAUGE	22-0476	1
11	NIPPLE	55-1274	1
12	FILTER	19-0302	1
13	FILTER	19-0216	1
14	FILTERS HOUSING	19-0634	2
15	LOCKWASHER	29-1007	4
16	BOLT	27-5067	4
17	WASHER	28-0122	12
18	ELBOW	23-0035	1
19	ADAPTER	23-0136	1
20	BALL VALVE	22-0321	1
21	REDUCER	23-0473	1
22	ELBOW	23-0364	1
23	HOSE BARB	23-0358	1
24	BOLT	27-5276	8
25	FILTER BRACKET	20-1663A18	1
-	FILTER WRENCH	33-0378	1
*MUST ORDER IN ONE FOOT LENGTHS			

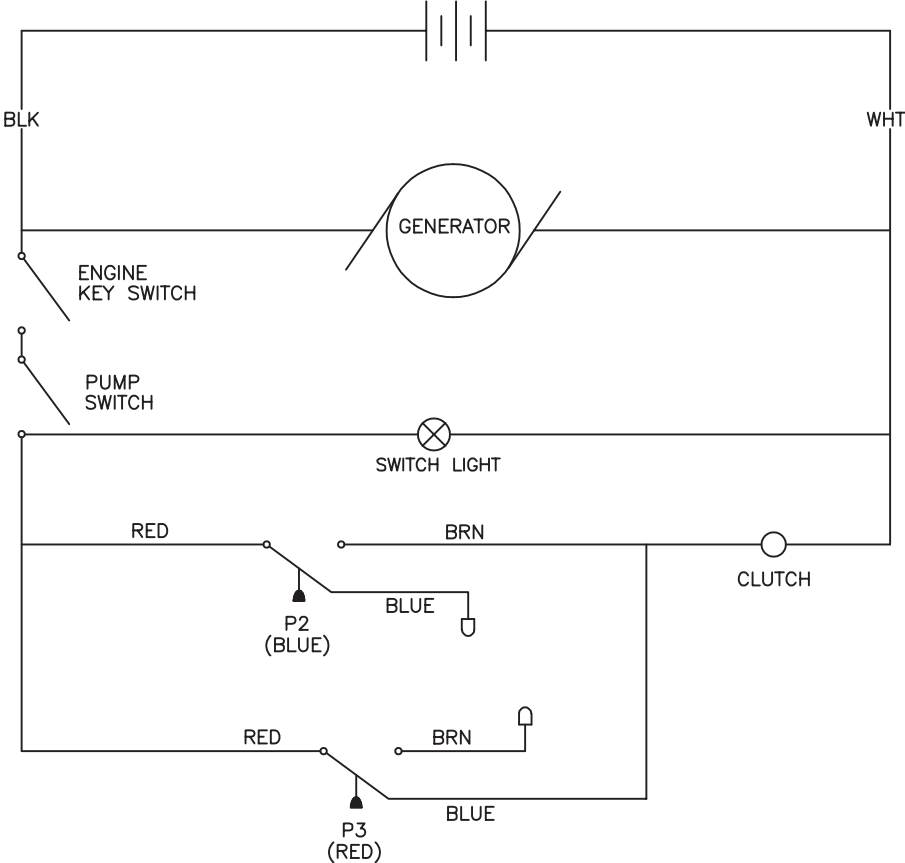
WIRE SCHEMATIC FOR ALTERNATOR 120V (HX-0252)



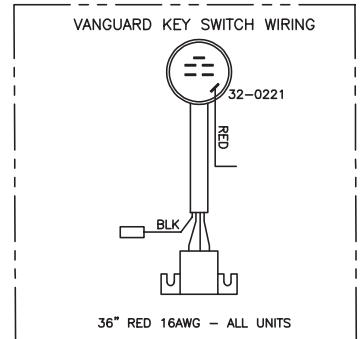
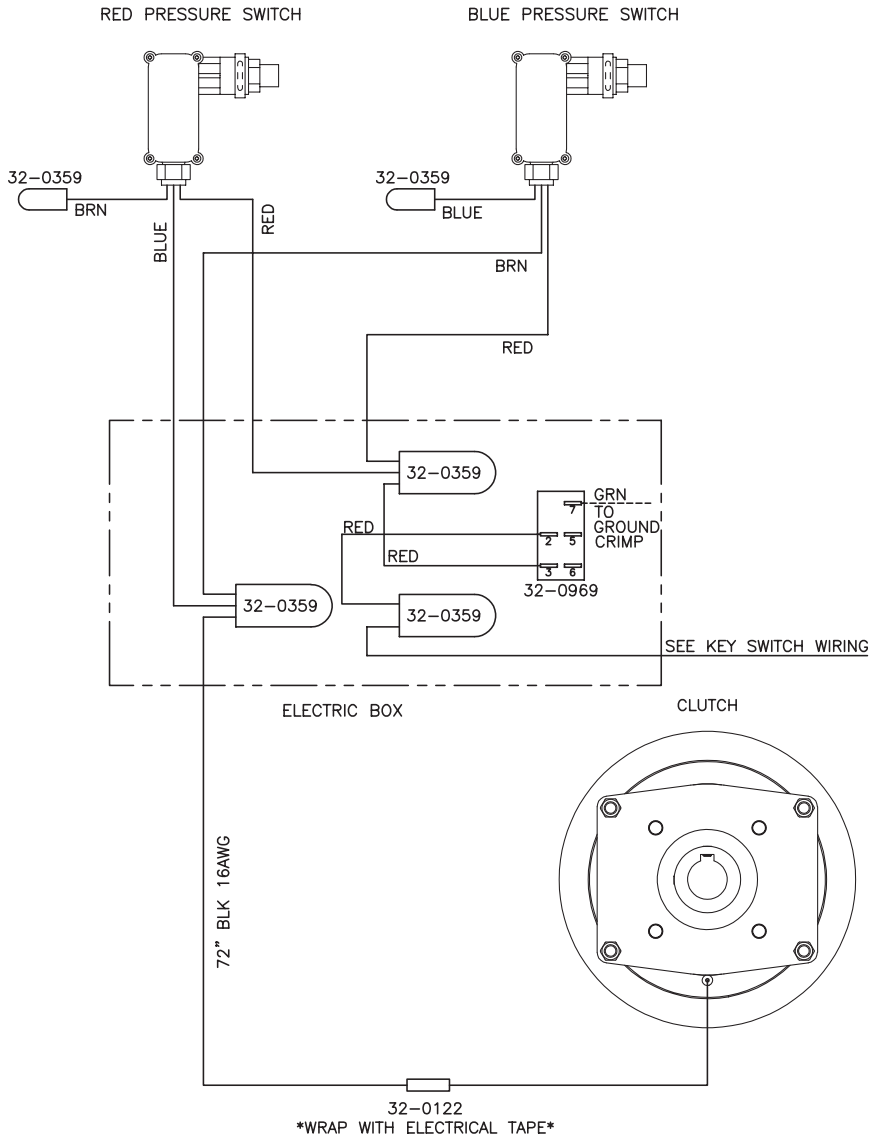
WIRE DIAGRAM FOR ALTERNATOR 120V (HX-0252)



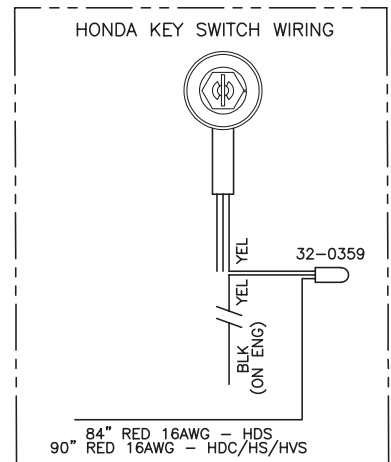
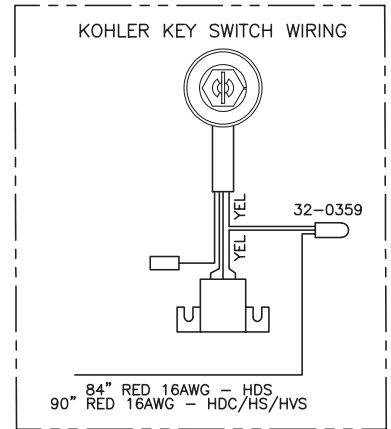
WIRE SCHEMATIC FOR CLUTCH 12V (HX-0252 AND HX-0253)



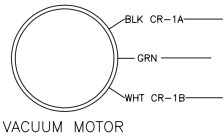
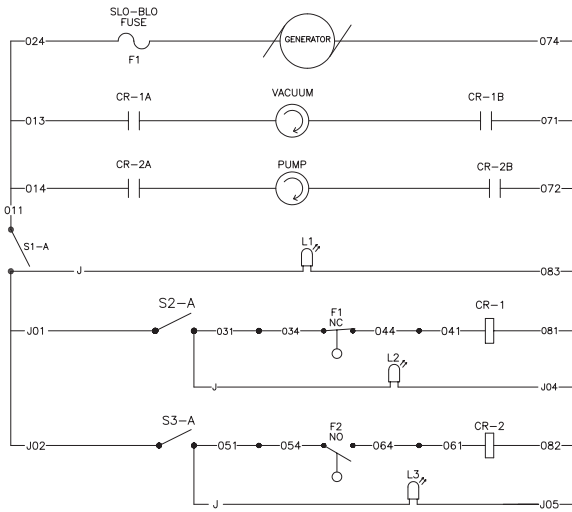
WIRE DIAGRAM FOR CLUTCH 12V (HX-0252)



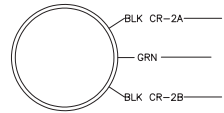
NOTE: 36" RED WIRE FROM E-BOX USE 32-0221 TERMINAL TO ATTACH IT TO THE KEYSWITCH



WIRE DIAGRAM FOR PWR-10-0M10



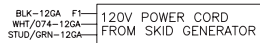
VACUUM MOTOR



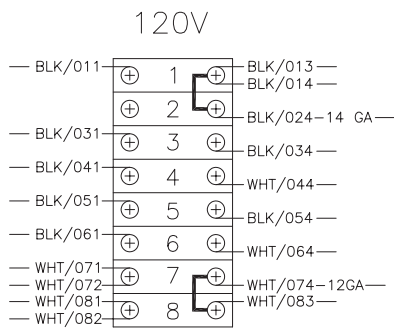
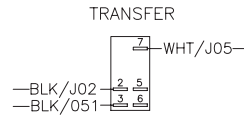
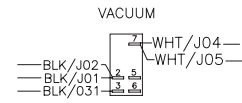
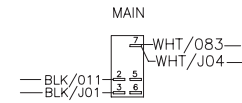
TRANSFER PUMP



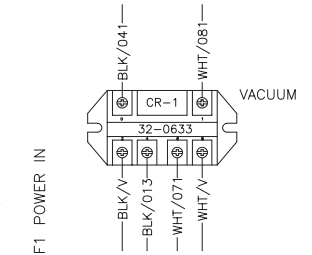
VACUUM-GRN
TRANSFER-GRN
POWER-GRN 12GA



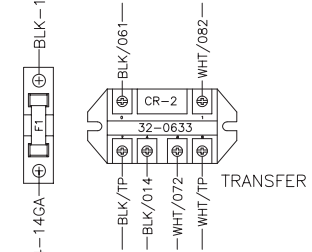
BLK-12GA F1
WHT/074-12GA
STUD/GRN-12GA



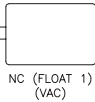
120V



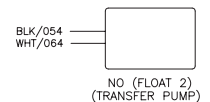
VACUUM



TRANSFER



BLK-12GA F1 POWER IN



NO (FLOAT 2)
(TRANSFER PUMP)

