

PERISTALTIC METERING PUMP
RC-0010-0120
RC-0010-0230
OPERATING INSTRUCTIONS



CAUTION
RISK OF INJURY!


READ MANUAL *BEFORE* OPERATING!

**This manual is an important part of the peristaltic metering pump
and must remain with this unit!**


TABLE OF CONTENT

INTRODUCTION	3
INSTALLATION INSTRUCTIONS.....	4
SUMMARY	4
SURVEY LOCATION	4
ELECTRICAL HOOKUP.....	4
TUBING CONNECTIONS	4
OPERATING INSTRUCTIONS	5
PROGRAMMING	5
PRIMING	5
PARTS LISTINGS.....	6-9
RC-0010-0120.....	6-7
RC-0010-0230.....	8-9
NOTES.....	10
WARRANTY.....	11

WARNING

 **WARNING:** This product can expose you to chemicals including Lead, which is known to the State of California to cause cancer and birth defects or other reproductive harm. For more information go to www.P65Warnings.ca.gov

WARNING

 **WARNING:** This product can expose you to chemicals including carbon monoxide, which is known to the State of California to cause birth defects or other reproductive harm. For more information go to www.P65Warnings.ca.gov

INTRODUCTION

Congratulations on the purchase of your peristaltic metering pump! You can be assured your peristaltic metering pump was constructed and designed with quality and performance in mind. Each component has been rigorously tested to ensure the highest level of acceptance.

This operator's manual was compiled for your benefit. The contents of this manual are based on the latest product information available at the time of publication. The manufacturer reserves the right to make changes in price, color, materials, equipment, specifications or models at any time without notice.

! IMPORTANT !

These paragraphs are surrounded by a "SAFETY ALERT BOX". This box is used to designate and emphasize Safety Warnings that must be followed when operating this pressure washer.

Accompanying the Safety Warnings are "signal words" which designate the degree or level of hazard seriousness. The "signal words" used in this manual are as follows:



DANGER:

Indicates an imminently hazardous situation which, not avoided, WILL result in death or serious injury.



WARNING:

Indicates a potentially hazardous situation which, if not avoided, COULD result in death or serious injury.



CAUTION:

Indicates a potentially hazardous situation which, if not avoided MAY result in minor or moderate injury.

The symbols set above of this paragraph are "Safety Alert Symbols". These symbols are used to call attention to items or procedures that could be dangerous to you or other persons using this equipment.

ALWAYS PROVIDE A COPY OF THIS MANUAL TO ANYONE USING THIS EQUIPMENT. READ ALL INSTRUCTIONS BEFORE OPERATING THIS PRESSURE WASHER AND ESPECIALLY POINT OUT THE "SAFETY WARNINGS" TO PREVENT THE POSSIBILITY OF PERSONAL INJURY TO THE OPERATOR.

Once the unit has been removed from the box, immediately write in the serial number of your unit in the space provided below.

SERIAL NUMBER _____

Inspect for signs of obvious or concealed freight damage. If damage does exist, file a claim with the transportation company immediately. Be sure that all damaged parts are replaced and that the mechanical problems are corrected prior to operation of the unit. If you require service, contact your customer service.

Please have the following information available for all service calls:

1. Model Number
2. Serial Number
3. Date and Place of Purchase

INSTALLATION INSTRUCTIONS

SUMMARY:

The Peristaltic Metering Pump is designed to feed chemicals into drains and grease traps to break up grease, detergent build up and eliminate odors. All programming is done by use of a set of DIP switches that determine the various times and amount of chemical to be dispensed.



Please read all instructions before proceeding with the Peristaltic Metering Pump installation.

SURVEY LOCATION:

Determine a location to hang the Peristaltic Metering Pump on a wall near the drain or grease trap to be supplied with the chemical product. The Peristaltic Metering Pump can be hung on the wall by use of the supplied wall bracket kit. The location should provide access to 120V, 208, 230/240V 50/60Hz electrical power.

ELECTRICAL HOOKUP:



WARNING: ALL INSTALLATIONS MUST BE IN ACCORDANCE WITH CITY, COUNTY, STATE OR PROVINCIAL ELECTRICAL CODES AND BE PERFORMED BY A CERTIFIED ELECTRICIAN. FOR QUESTIONS, PLEASE CONTACT LOCAL LICENSED ELECTRICAL CONTRACTOR.



WARNING: BEFORE GOING ANY FURTHER, ALL ELECTRICAL POWER MUST BE TURNED OFF TO THE CIRCUIT THAT IS TO BE USED FOR THIS INSTALLATION. LOCKOUT AND TAG PROCEDURES SHOULD BE OBSERVED WHEN INSTALLING THIS DEVICE. NEVER OPEN THE PERISTALTIC METERING PUMP UNLESS POWER HAS BEEN TURNED OFF. ONLY USE ELECTRICAL CODE APPROVED INSULATED WIRING AND ELECTRICAL FIXTURES WITH THIS INSTALLATION.

1. Connect the power to the Peristaltic Metering Pump. The Peristaltic Metering Pump will accept 120VAC, 208VAC or 230/240VAC 50/60Hz.
2. Locate the power terminal block inside the Peristaltic Metering Pump enclosure. Connect the "return line" to the appropriate terminal block position based on supply voltage. The "earth ground" wire must be connected to the terminal block position labeled "GND". The power line should be secured by use of a proper electrical fitting through access hole in Peristaltic Metering Pump enclosure. The power line must also be secured properly power source and Peristaltic Metering Pump.

TUBING CONNECTIONS:

Cut off the proper lengths of LDPE tubing that will reach from the container of product to the inlet of the Peristaltic Metering Pump and the outlet of the pump to the drain or grease trap.

Insert the chemical supply tubing into the end of the ¼" ID pump tube located on the left side of the pump (1/2"-3/4" insertion required). Loop one wire tie around the squeeze tube/LDPE tube joint. The other end of the chemical supply tubing can be connected to the 10" PVC pickup tube that has been supplied. This should be done by slipping the LDPE tubing through the compression nut and sleeve and into the threaded end of the pickup tube until LDPE tubing is about ¼" from the bottom of the pickup tube. The pickup tube can be placed in gallon containers of chemical products. If the pickup tube is not used, the supply tube should be properly secured to the supply container to assure that chemical product is delivered.

Insert the outlet tubing into the end of the ¼" ID pump tube located on the right side of the pump (1/2"-3/4" insertion required). Loop one wire tie around the squeeze tube/LDPE tube joint. The other end of the outlet tubing must be secured into drain or grease trap to assure that chemical product is properly delivered. It is suggested to use a 1/8" NPT male x ¼" compression fitting when fitting discharge into the side of a drainpipe.

OPERATING INSTRUCTIONS

PROGRAMMING:

Open the cover on the Peristaltic Metering Pump. All of the DIP switches should be visible on the control board on the backside of the cover. **All of these switches must be in the “off” position to begin programming.**

TIME SET: Find the DIP switch that corresponds to the closest hour of the current time. There are 12 DIP switches for AM and 12 for PM. After finding the correct switch flip it to the “on” position. The “time set” LED will go out.

FEED TIME: Using the same switches set the hours in which the Peristaltic Metering Pump should operate by switching the appropriate switch to the “on” position.

NOTE: If the DIP switch that was set for the “time set” is not a desirable “feed time”, simply turn that switch to the “off” position. But not until at least one feed time has been selected. This will insure that the “time set” will not be lost.

DOSAGE: There are a series of 6 DIP switches that are labeled “dosage”. The number labeled next to each switch indicates the number of ounces to be dispensed.

Example: Switch 2 will dispense 2 ounces of product. These may be added together for higher doses.

Example: Switches 5 and 6 in the “on” position will dispense 11 ounces of product. The maximum is 21 ounces at each “feed time” that has been set.

REPROGRAM: Flip all the DIP switches to “off” position.

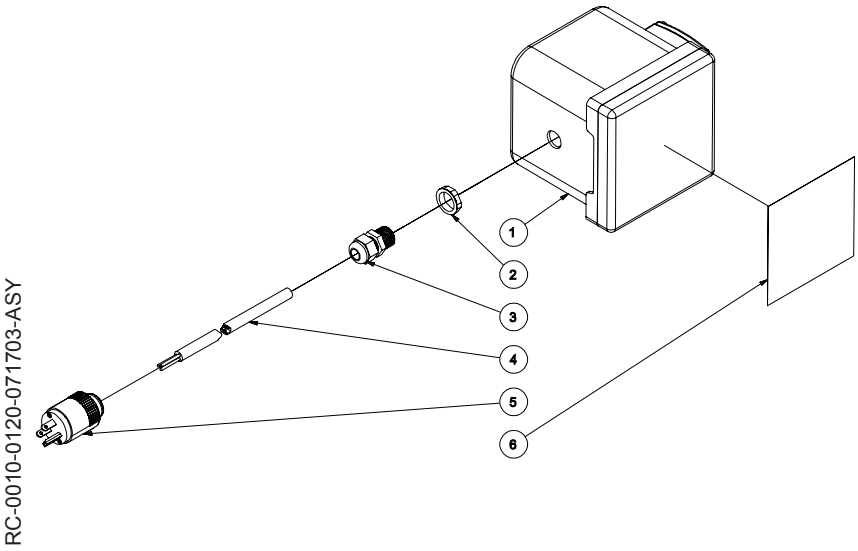
PRIMING:

After installation is complete the pump and tubing will need to be primed so that chemical product will be delivered when the Peristaltic Metering Pump is running. This is simply done by pressing and releasing the prime button on the front of the Peristaltic Metering Pump; the pump should begin to run. The pump will run for the amount of dose that has been set.

NOTE: *At any time the Peristaltic Metering Pump pump can be shut off by simply pushing the prime button again.*

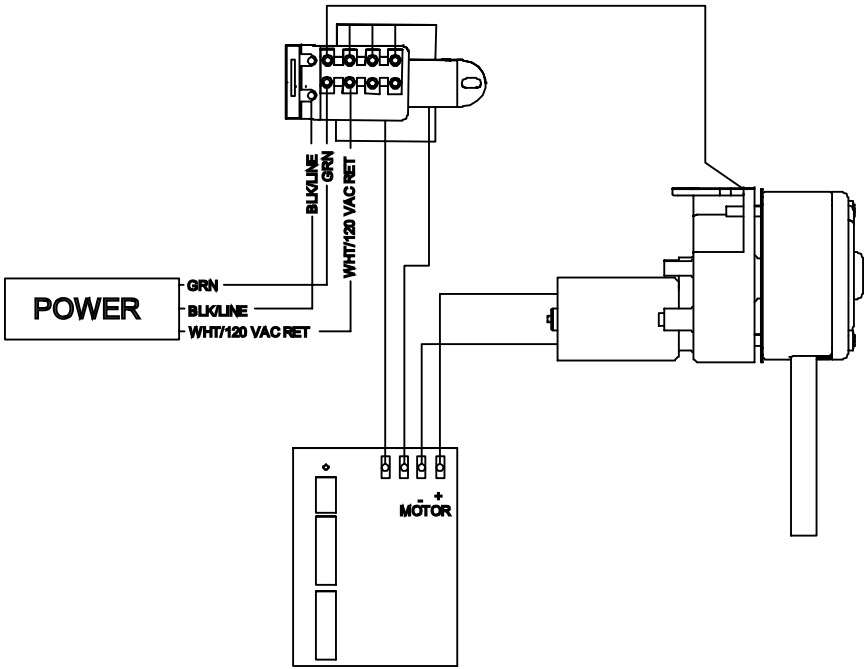
PARTS LISTING

RC-0010-0120 DRAWINGS:



RC-0010-0120-071703-ASY

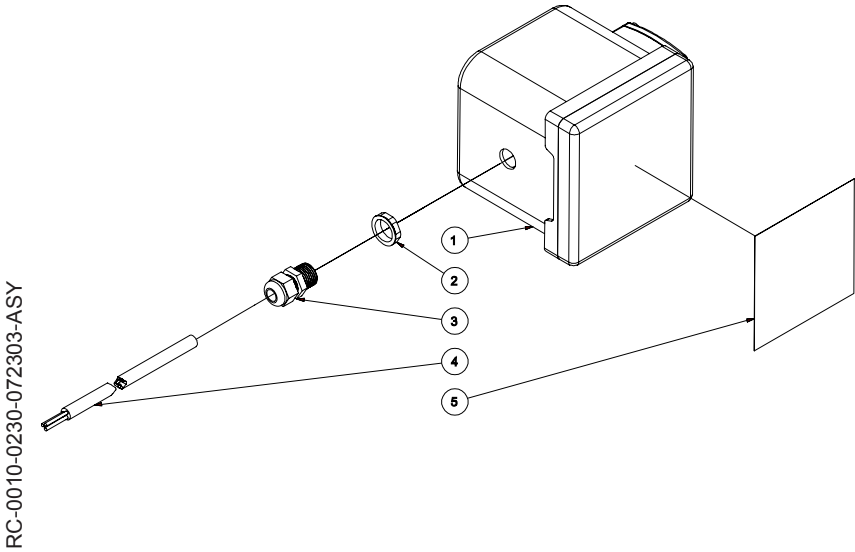
RC-0010-0120			
REF #	DESCRIPTION	PART #	QTY
1	Peristaltic Metering Pump	3-0220	1
2	Locknut	32-0108	1
3	Strain Relief	32-0437	1
4	Cord *(Twenty Feet Required)	32-0074	1
5	Plug	32-0026	1
6	Decal- Peristatic Pump	34-1434	1
*Must Order in One Foot Lengths			



WIRING DIAGRAM PARISTALTIC METERING PUMP 120V

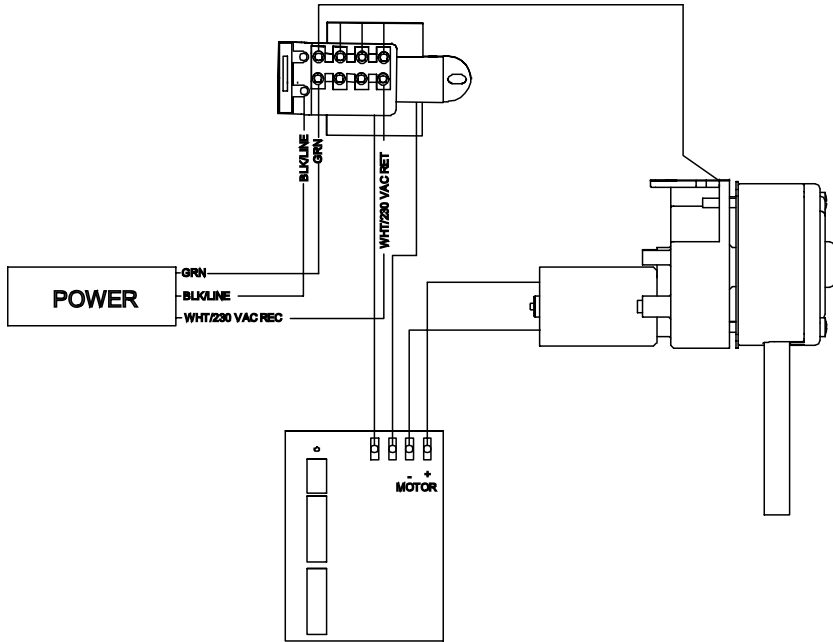
PARTS LISTING

RC-0010-0230 DRAWINGS:



RC-0010-0230-072303-ASY

RC-0010-0230			
REF #	DESCRIPTION	PART #	QTY
1	Peristaltic Metering Pump	3-0220	1
2	Locknut	32-0108	1
3	Strain Relief	32-0437	1
4	Cord *(Twenty Feet Required)	32-0074	1
5	Decal- Peristatic Pump	34-1434	1
*Must Order in One Foot Lengths			



WIRING DIAGRAM PERISTALTIC METERING PUMP 230V

NOTES



STATEMENT OF WARRANTY

This manufacturer products are warranted against defective material and workmanship under normal use and service for one year from the date of manufacturer. This limited warranty does not apply to any products, which have a normal life shorter than one year or failure and damage caused by chemicals, corrosion, improper voltage supply, physical abuse, or misapplication. Rubber and synthetic rubber parts such as "O" rings, diaphragms, squeeze tubing and gaskets are considered expendable and are not covered under warranty. This warranty is extended only to the original buyer of the manufacturer's products. If products are altered or repaired without prior approval of the manufacturer, this warranty is void.

